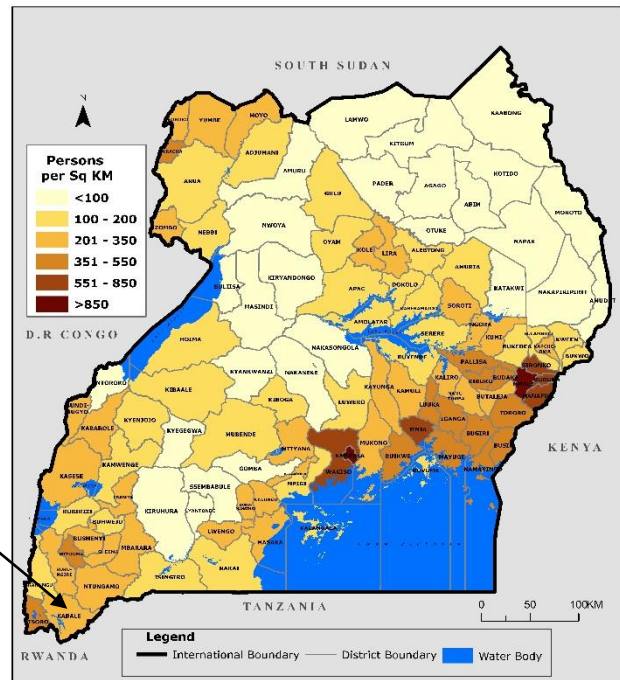
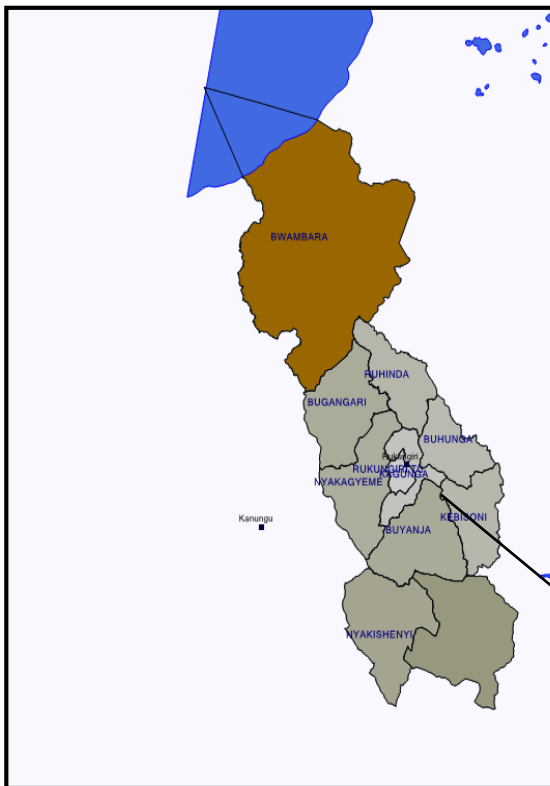


**RUKUNGIRI DISTRICT LOCAL GOVERNMENT STATISTICAL ABSTRACT 2019/20**



**Rukungiri District Local Government**  
 P.O. Box 1, Rukungiri – Uganda  
 Email: [rukungiridistrictlocalgovernment@gmail.com](mailto:rukungiridistrictlocalgovernment@gmail.com)  
 Website: [www. Rukungirilg.go.ug](http://www.Rukungirilg.go.ug)

**“Report prepared with support from Uganda Bureau of Statistics”**

**AUGUST, 2020**

## **FOREWORD**

The importance of statistics in planning and monitoring of government programmes cannot be over emphasised. We need to know where we are, determine where we want to reach and know whether we have reached there. The monitoring of socio-economic progress is not possible without measuring how we progress and establishing whether human, financial and other resources are being used efficiently.

However, these statistics have in many occasions been national in outlook and less district specific. The development of a district-based Statistical Abstract shall go a long way to solve this gap and provide district tailored statistics and will reflect the peculiar nature of the district by looking at specific statistics, which would not be possible to provide at a higher level.

Data and statistics are required for designing, planning, implementing, monitoring and evaluating development programmes. For instance, statistics on school enrolment, completion rates and dropout rates etc. are vital in the monitoring of Universal Primary Education (UPE) and Universal Secondary Education (USE) programmes. Statistics are also needed for establishing grant/aid to community, schools, staff levels and other investments in the education programmes. The collection and use of statistics and performance indicators is critical for both the successful management and operation of the of the District and will also act as an aggregation of statistics from all sectors, including Lower Local Governments.

For data to inform planning and service delivery, it should be effectively disseminated to the various users and stakeholders. The initiative to compile and disseminate this District Statistical Abstract is therefore an effort to support the Planning function of the Local Governments and other users interested in the Higher Local Government (HLG) statistics.

This District Statistical Abstract will go a long way in guiding District Policy makers, Planners, Researchers and other stakeholders to identify the indicators that are relevant for planning, monitoring and evaluation of Government programmes in the District.

The Statistical Abstract acts as a source of information originating from NGOs and other organizations in the District. The Statistical Abstract, therefore, is an annual snapshot documentation of the Rukungiri District situation, providing a continuous update of the district status.

It is my sincere hope that the document will provide all interested users with adequate information and I feel that where more information is required, appropriate departments should be contacted for details.

**KATEEBIRE ANDREWSON**  
**DISTRICT CHAIRPERSON, RUKUNGIRI**

## **ACKNOWLEDGEMENT**

Rukungiri District Statistical Abstract 2019/20 has been developed and guided by strategic direction of Rukungiri District envisioning to be an efficient and demand-driven Local Government Statistical System in Uganda thereby producing and disseminating quality statistics that will inform planning and decision making for improved service delivery in the District Local Government

With regard to service delivery, the use of reliable, accurate and timely data is vital in the planning processes. It is therefore important that local government data is accurate, timely, consistent, gender responsive and accessible to facilitate planning and decision-making processes.

Rukungiri District gratefully acknowledges the efforts of all the heads of departments and sections who contributed to the production of this Statistical Abstract.

Special thanks go to the members of the District Statistical committee for the effort put in to collect the necessary data. It may not be possible to enumerate all those who gave their time but a few groups and individuals deserve special mention.

Special thanks go to Uganda Bureau of Statistics (UBOS) for their effort in Capacity Building to the district staff to see to it that Rukungiri district gets specific data and statistics required for designing, planning, implementing, monitoring and evaluating development programmes. The district has received many documents from UBOS, such as reports of the Population and Housing Censuses, the National Service Delivery Surveys, the Uganda Demographic and Health Surveys, to mention but a few.

Lastly, I wish to thank the District Planning Unit staff, all the Technical staff from all departments for providing the required data.

**BYAMUNGU ELIAS**  
**CHIEF ADMINISTRATIVE OFFICER, RUKUNGIRI**

# TABLE OF CONTENTS

FOREWORD	I
ACKNOWLEDGEMENT	II
TABLE OF CONTENTS	III
LIST OF TABLES	VI
LIST OF FIGURES	VIII
LIST OF ACRONYMS	IX
EXECUTIVE SUMMARY	X
GLOSSARY	XIII
GENERAL INFORMATION ABOUT THE DISTRICT	XVIII
District Vision	xxi
District Mission	xxi
Goal	xxi
Strategic objectives of Rukungiri LG	xxi
CHAPTER 1: BACKGROUND INFORMATION	1
1.0 Introduction	1
1.1 Location and Size	1
1.2 Historical Background	1
1.3 Tourism in Rukungiri District	1
1.4 Geographical Features	3
1.4.1 Topography	3
1.4.2 The Highland Area	4
1.4.3 The Plateau Area	4
1.4.4 Climate	4
1.4.5 Soils	4
1.4.6 Drainage	4
1.4.7 Mineral Resources	5
1.4.8 Vegetation (Flora)	5
1.4.9 Wild Life (Fauna)	5
1.4.10 Land Resources	5
1.4.11 Water Coverage	5
CHAPTER 2: MANAGEMENT SUPPORT SERVICES	7
2.0 Introduction	7
2.1 Administrative Structure	7
2.2 Human Resource Management	8
2.3 Council, Committees, Boards, and Commissions	9
2.4 Executive committee members	9
2.5 District Service Commission	10
2.6 Public Accounts Committee (PAC)	10
CHAPTER 3: DEMOGRAPHIC AND SOCIO-ECONOMIC CHARACTERISTICS	11
3.0 Introduction	11
3.1 Population Characteristics	11
3.1.1 Population size and Growth Rate	11
3.1.2 Population Distribution	12
3.1.3 Population Density	13
3.1.4 Urbanization rates and levels	13

3.1.5 Average Household size-----	13
<b>3.2 Socio-Economic Characteristics-----</b>	<b>14</b>
3.2.1 Housing conditions by type of house-----	14
<b>3.3: Planning and Budgeting Process-----</b>	<b>15</b>
3.3.1 Budgetary Allocations to Departments-----	15
3.3.2: Revenue sources by Amount-----	16
3.3.3 Sectoral expenditure-----	16
<b>CHAPTER 4: HEALTH SERVICES-----</b>	<b>17</b>
<b>4.0 Introduction-----</b>	<b>17</b>
<b>4.1 Health Infrastructure-----</b>	<b>17</b>
<b>4.2 Accessibility to health Services-----</b>	<b>18</b>
4.2.1 Distance to the nearest Health Unit-----	18
4.2.2 Health Services Accessibility indicators-----	18
<b>4.3 Morbidity and cause of ill health-----</b>	<b>19</b>
<b>4.4 Health Manpower-----</b>	<b>19</b>
<b>4.5 Safe Water Coverage-----</b>	<b>21</b>
<b>4.6 Latrine Coverage-----</b>	<b>22</b>
<b>4.7 Immunization coverage during 2019/20-----</b>	<b>23</b>
<b>4.8 Drug Inspection-----</b>	<b>24</b>
<b>4.9 Tuberculosis, Leprosy and Onchocerciasis-----</b>	<b>24</b>
<b>4.10 Maternal and Child Health (MCH)-----</b>	<b>25</b>
<b>4.11 AIDS control (Prevalence, Control and Treatment)-----</b>	<b>25</b>
4.11.1 Number of HIV Counselling Centres-----	25
4.11.2 HIV/AIDS Counselling and Testing (HCT) Sites-----	25
<b>4.12 Prevention of Mother to Child Transmission of HIV/AIDS-----</b>	<b>26</b>
4.12.1 HIV Counselling and Testing-----	26
4.12.2 Anti-retroviral Drug Administration-----	27
4.12.3 Labour and Delivery care-----	27
4.12.4 HIV testing for children aged 18 months to 5 years born to HIV positive mothers-----	27
<b>CHAPTER FIVE: EDUCATION SERVICES-----</b>	<b>28</b>
<b>5.0 Introduction-----</b>	<b>28</b>
<b>5.1 Educational Institutions-----</b>	<b>28</b>
5.1.1 Distance to the nearest primary school-----	28
5.1.2 Number of school going age children-----	29
5.1.3 Number of Primary schools-----	29
5.1.4 Secondary schools-----	30
5.1.5 Other Educational Institutions-----	30
<b>5.2 Infrastructure-----</b>	<b>31</b>
<b>5.3 Staffing levels-----</b>	<b>31</b>
<b>5.4 Enrolment and enrolment ratios – primary and Secondary (2019/20)-----</b>	<b>31</b>
<b>5.5 Efficiency Ratios (primary)-----</b>	<b>33</b>
<b>5.7 Performance in National Examinations by year in percentages-----</b>	<b>33</b>
<b>5.8 Inspectorate-----</b>	<b>34</b>
<b>CHAPTER SIX: WORKS AND TECHNICAL SERVICES-----</b>	<b>35</b>
<b>6.0 Introduction-----</b>	<b>35</b>
<b>6.1 Roads-----</b>	<b>35</b>
6.1.1 Roads by grade, Length and condition.-----	35
6.1.2 Planned roads by name and status-----	41

<b>6.2 Housing</b>	<b>42</b>
<b>6.3 Point water sources</b>	<b>42</b>
<b>CHAPTER SEVEN: NATURAL RESOURCES</b>	<b>44</b>
<b>7.0 Introduction</b>	<b>44</b>
<b>7.1 Environmental Sanitation</b>	<b>44</b>
<b>7.2 Forestry</b>	<b>45</b>
7.2.1. Natural and Planted Forests	45
7.4.2. Types of Forests	45
7.4.3 Private Forests in the District	46
<b>7.5 Conclusion</b>	<b>46</b>
<b>CHAPTER EIGHT: GENDER &amp; COMMUNITY BASED SERVICES</b>	<b>47</b>
<b>8.0 Introduction</b>	<b>47</b>
<b>8.1 General Community Development Issues</b>	<b>47</b>
<b>8.2 Probation, OVCs and Child Protection Issues (Orphan hood status)</b>	<b>47</b>
<b>8.3 Situation of OVC</b>	<b>48</b>
<b>CHAPTER NINE: PRODUCTION AND MARKETING</b>	<b>49</b>
<b>9.0 Introduction</b>	<b>49</b>
<b>9.1 Agriculture</b>	<b>49</b>
9.1.1 Crop production	49
9.1.2 Livestock and Veterinary Services	51
<b>9.2 Fisheries</b>	<b>52</b>
<b>9.3 Productive Entomology</b>	<b>55</b>
<b>9.4 Extension Services</b>	<b>56</b>
<b>9.5 Trade and Industry</b>	<b>56</b>
<b>ANNEX 1: DISTRICT STATISTIAL COMMITTEE</b>	<b>63</b>
<b>ANNEX 2: LIST OF GOVERNMENT PRIMARY SCHOOL</b>	<b>63</b>
<b>ANNEX 3: NAME OF SECONDARY SCHOOLS BY OWNERSHIP BY SUB-COUNTY BY COUNTY</b>	<b>67</b>

## LIST OF TABLES

TABLE 1.1: LIST OF TOURISM SITES IN RUKUNGIRI DISTRICTS .....	1
TABLE 1.2: ACCOMMODATION FACILITIES IN RUKUNGIRI .....	3
TABLE 2.1: SHOWING ADMINISTRATIVE UNITS BY COUNTY .....	7
TABLE 2.2: ESTABLISHMENT AND STAFFING STATUS AS OF JUNE 2020 .....	8
TABLE 2.3: COUNCIL, BOARDS AND COMMISSIONS .....	9
TABLE 2.4: TENDER BOARD .....	9
TABLE 2.5: LAND BOARD .....	9
TABLE 2.6: HOUSING COMMITTEE.....	9
TABLE 2.7: DISTRICT SERVICE COMMISSION .....	10
TABLE 2.8: PUBLIC ACCOUNTS COMMITTEE (PAC).....	10
TABLE 3.1: POPULATION BY SEX BY SUB COUNTY .....	12
TABLE 3.2: POPULATION DISTRIBUTION BY RURAL – URBAN .....	13
TABLE 3.3: AVERAGE HOUSEHOLD SIZE BY SUB-COUNTY .....	13
TABLE 3.4: TYPE AND CONSTRUCTION MATERIALS OF THE DWELLING UNITS .....	14
TABLE 3.5: BUDGETARY ALLOCATIONS BY DEPARTMENTS FOR FY 2019/20 .....	15
TABLE 3.6: RUKUNGIRI DISTRICT REVENUE SOURCES FOR FOUR FINANCIAL YEARS .....	16
TABLE 3.7: ESTIMATED AND ACTUAL EXPENDITURE FOR FY 2019/20 .....	16
TABLE 4.1: HEALTH INFRASTRUCTURE (CATEGORIES) .....	17
TABLE 4.2: NUMBER OF HEALTH UNITS.....	17
TABLE 4.3: DISTANCE TO NEAREST HEALTH FACILITY OF HOUSEHOLDS BY SUB -COUNTY .....	18
TABLE 4.4: STAFFING IN DISTRICT HEALTH OFFICE .....	19
TABLE 4.5: STAFFING IN GOVERNMENT HEALTH UNITS HC IV .....	20
TABLE 4.6: STAFFING IN GOVERNMENT HEALTH CENTRE III .....	21
TABLE 4.7: STAFFING IN GOVERNMENT HEALTH CENTRE II .....	21
TABLE 4.8: DISTANCE OF HOUSEHOLDS TO NEAREST WATER SOURCE BY SUB-COUNTY .....	22
TABLE 4.9: LATRINE COVERAGE FOR 2019/20.....	23
TABLE 4.10: PERCENTAGE DISTRIBUTION OF TOILET FACILITIES BY TYPE2 .....	23
TABLE 4.11: COVERAGE OF HIV/AIDS COUNSELLING AND TESTING (HCT) SERVICES.....	25
TABLE 4.12: DISTRIBUTION OF HCT SERVICES BY FACILITY BY LOCATION .....	26
TABLE 5.1: DISTANCE OF HOUSEHOLDS TO NEAREST PRIMARY SCHOOL BY SUB-COUNTY .....	28
TABLE 5.2: SCHOOL GOING AGE BY GENDER .....	29
TABLE 5.3: NUMBER OF PRIMARY SCHOOLS BY OWNERSHIP BY SUB-COUNTY .....	29
TABLE 5.4: NUMBER OF SECONDARY SCHOOLS BY OWNERSHIP BY SUB-COUNTY.....	30
TABLE 5.5: OTHER EDUCATIONAL INSTITUTIONS BY OWNERSHIP .....	30
TABLE 5.7: AVAILABLE INFRASTRUCTURE IN SCHOOLS .....	31
TABLE 5.8: STAFFING LEVELS .....	31
TABLE 5.9: NO. OF TEACHERS AND PUPILS BY GENDER IN GOVERNMENT AIDED PRIMARY SCHOOLS .....	31
TABLE 5.10: NUMBER OF SECONDARY SCHOOL TEACHERS AND STUDENTS BY SCHOOL (2019/20) .....	32
TABLE 5.11: P.L.E RESULT ANALYSIS BY YEAR AND PERCENTAGE.....	33

TABLE 5.12: PLE PERFORMANCE BY GENDER AND DIVISION 2019 .....	34
TABLE 6.1: DISTRICT ROADS BY TYPE, LENGTH AND CONDITION AS OF 2019/20.....	36
TABLE 6.2: DISTRICT: RUKUNGIRI; TRUNK ROADS .....	38
TABLE 6.3: NUMBER OF KMS OF ROADS MAINTAINED BY SUB COUNTY .....	40
TABLE 6.4: SELECTED DEVELOPMENT INDICATORS .....	40
TABLE 6.5: ROADS BY TYPE BY MAINTAINING AUTHORITY .....	41
TABLE 6.6: CAPACITY AND CONDITION OF DISTRICT OFFICE BLOCKS.....	42
TABLE 6.7: POINT WATER SOURCES BY SUB COUNTY .....	42
TABLE 6.8: SAFE WATER SOURCES .....	43
TABLE 7.1: WASTE MANAGEMENT (PARTICULARLY FOR URBAN) AS OF 2019/20 .....	44
TABLE 7.2: TYPE OF FORESTS BY ACREAGE .....	45
TABLE 7.3: LOCAL FOREST RESERVES .....	45
TABLE 7.4: GAZETTED FOREST RESERVES .....	45
TABLE 7.5: DISTRIBUTION OF FOREST RESERVES BY CATEGORY .....	45
TABLE 8.1: COMMUNITY DEVELOPMENT GROUPS IN THE DISTRICT .....	47
TABLE 8.2: NUMBER OF ORPHANS BY AGE GROUP AND TYPE BY SUBCOUNTY .....	48
TABLE 9.1: ESTIMATED NUMBER OF HOUSEHOLDS ENGAGED IN SELECTED CROP PRODUCTION,2019/20.....	49
TABLE 9.2: COMMON DISEASES AND PESTS FOR SELECTED CROPS.....	50
TABLE 9.3: TECHNICAL STAFF BY CATEGORY BY GENDER.....	50
TABLE 9.4 STAFFING IN VETERINARY DEPARTMENT BY SEX.....	51
TABLE 9.5 LIVESTOCK IN THE DISTRICT.....	51
TABLE 9.6 NUMBER OF ANIMAL DRUG SHOPS ESTABLISHED AND OPERATIONAL AT STANDARDS.....	52
TABLE 9.7 LIVESTOCK DISEASES.....	52
TABLE 9.8 NUMBER OF FISH FARMERS BY SUB COUNTY.....	53
TABLE 9.9: STOCKED FISH PONDS BY TYPE BY SUB-COUNTY. MIRROR CARP.....	53
TABLE 9.10: NUMBER OF LANDING SITES BY ANNUAL FISH CATCH AND VALUE BY SUB-COUNTY FOR 2014 .....	54
TABLE 9.11 NUMBER OF BEE FARMERS IN THE DISTRICT BY TYPE, NUMBER OF BEEHIVES AND PRODUCTION.....	55
TABLE 9.12: RATIO OF EXTENSION WORKERS TO FARMING HOUSEHOLDS.....	56
TABLE 9.13: NUMBER OF REGISTERED COOPERATIVE ORGANIZATIONS BY SUB COUNTY.....	56
TABLE 9.14: NUMBER OF MARKETS BY TYPE BY SUB COUNTY .....	57
TABLE 9.15 SLAUGHTER SLABS/HOUSES BY LOCATION .....	58



## **LIST OF FIGURES**

FIGURE 3.1: TOTAL POPULATION AND GROWTH RATES AS COMPARED TO THE WESTERN REGION BY YEAR.....	11
FIGURE 4.1: DISEASE BURDEN OF TOP TEN DISEASES .....	19
FIGURE 4.2: PERCENTAGE COVERAGE OF ANTIGEN BY FINANCIAL YEAR.....	24

## **LIST OF ACRONYMS**

Adm	Administration
CBS	Central Broadcasting Service
CFR	Central Forest Reserve
CORPs	Community Own Resource Persons
FY	Financial Years
H/C	Health Centre
HLG	Higher Local Government
HSD	Health Sub-District
LC	Local Council
LFR	Local Forest Reserve
LLG	Lower Local Government
LQAS	Lot Quality Assurance Sampling
MTN	Mobile Telephone Network
N/A	Not Available
NGO	Non-Government Organization
PNFP	Private not for profit
SFG	School Facilities Grant
Sq Km	Square Kilometres
STI	Sexually Transmitted Infections
T.C	Town Council
TB	Tuberculosis
TFR	Total Fertility Rate
TPC	Technical Planning Committee
TT	Tetanus
UBOS	Uganda Bureau of Statistics
UPE	Universal Primary Education

## **EXECUTIVE SUMMARY**

The District Statistical Abstract is the district's prime annual report submitted to UBOS with the District Key Statistical Information from which, a National statistical abstract is compiled and published. It provides the statistical summary on various socio-economic indicators for Rukungiri District and some figures in this edition may vary from those in the earlier editions due to the updates.

This abstract is divided into nine (9) major chapters which are preceded by a glossary of definitions and general information on Rukungiri District. A set of Statistical Appendix Tables that are serialized, using a combination of numbers and alphabets, such as Annex 1, Annex 2 etc., are also provided for the readers' information. The reader is encouraged to refer to such tables while reading the text. It should be noted that the number of districts has been increasing.

Chapter one gives background information, location, size, climate, and vegetation, geographical and other features about the district:

### **Location and size**

Rukungiri is located in Western region of Uganda at Latitude 00<sup>o</sup> 47' 21"S and Longitude 29<sup>o</sup> 56' 30" E and is bordered by Ntungamo and Mitooma districts in the East, Kabale in the South, Rubirizi in the north and Kanungu district and Democratic Republic of Congo (DRC) in the West. And covers a total area of 1,524.28 Sq. Kms

### **Historical Background**

At Independence in 1962, Rukungiri District was part of the Kigezi District. It was created in 1974 and was called North Kigezi District until 1980 when the name was changed to Rukungiri District

### **Tourism**

Rukungiri district is gifted with a wide range of tourism products ranging from Queen Elizabeth National Park, Kigezi Wild Life Reserve, hot springs, water falls etc

### **Geographical Features**

The District has a total area of 1,524.28 Sq. Kms, 11% of which comprises tropical high forests, 5.5% woodland, 2.6% bush land, 21.3% grassland, 52% farmland and 7.6% open water

Chapter two presents statistics on management and support services. It presents details on district administrative structure. Human Resources Management, the Councils, Boards and Commissions, Public Accounts Committee and land board

### **Administrative Structure**

Rukungiri District has three counties of Rujumbura, Rubabo and Municipality. It has a total of 9 Sub-counties, 4 Town Councils and 3 municipal divisions. It has a total of 62 parishes, 25 wards and a total of 827 villages.

## **Human Resource Management**

Rukungiri has a total approved posts of 3124 and a total of 2596 are filled leaving a gap of 528(16.9%)

## **Council, Committees, Boards, and Commissions**

Rukungiri District has a total of 35 councilors comprising of 24 males and 11 female councilors and there is no vacant post in the council

Chapter three presents information from the department of finance and planning. It focuses on the population and social-economic characteristics of the district, the planning & budgeting process, the available revenue sources, and the expenditures in the previous financial year.

## **Population Characteristics**

Rukungiri District had a total population of 314,694 in 2014 and a total of 69,535 households with average household size of 4.5 persons (UBOS Census). It is now projected to be at a rate of 1.7% per annum. The recent (July 2020) under the net campaign covered a total of 80,863 households and a population of 416,777 with an average household size of 5.2 persons.

## **Planning and Budgeting Process**

The district distributed a total of 39,680,171,939 across all sectors including town councils and Lower local governments where education department took 56%, Health department, 16.4%, administration 15.2% and the least share goes to Trade, Industry & Local Dev't (0.1%)

Chapter four presents information from the department of Health. It focuses on the Health Infrastructure, Accessibility to health Services, Morbidity and cause of ill health, Health Manpower Latrine Coverage, Maternal and Child Health (MCH), AIDS control (Prevalence, Control and Treatment), and Prevention of Mother to Child Transmission of HIV/AIDS.

- Number of Health facilities 94 (55 for government and 39 PNFP)
- Number of Private pharmacies 4
- Number of Drug shops 69
- Number of Private clinics 20
- Number of Allied Clinics 2
- Average Population served by each health unit: 3597 people
- Percentage of population within 5km radius of health unit: 95.3%
- The district functionality status of water sources is at 86%, management committees is 89% with gender balance of 90%

Chapter five presents information from the department of Education. It focuses on the Educational Institutions, schools Infrastructure, Staffing levels, Enrolment and enrolment ratios – primary and Secondary, Efficiency Ratios (primary), Performance in National Examinations by year in percentages, and Inspectorate.

- Rukungiri District has at least a primary school in every 5km radius.

- The district has a total of 50,000 primary school going children, 16,091 secondary school going children and 477 post-secondary school going children
- The district has a total of 289 primary schools where 178 are government aided and 111 are privately sponsored.
- The district has a total of 54 secondary schools where 24 are government aided and 30 are privately sponsored.
- The district has 70 preprimary schools
- Pupil-teacher ratio 39:1
- Pupil- desk ratio 8:1
- Pupil-classroom ratio 80:1
- Pupil-latrine stance ratio 60:1
- Pupil-text book ratio 3:1
- Inspector: Primary School ratio: 5:178
- 14.7% of children who sat PLE for 2019 passed in grade 1

Chapter six presents information from the Department of works and technical services It focuses on Roads by grade, Length and condition, Housing, and Point water sources. The District has a total of approximately 345.81km of road network, 122.17km of Urban Road Network, 845.07km of Community Access Road network. The district is in charge of maintaining the condition of feeder roads whereas Sub-Counties maintain community roads.

Chapter seven presents information from the Department of Natural Resource which comprises of the Natural Resources Office, the Lands and Physical Planning Office as well as the Forestry, Environment & Wetlands Office. It focuses on Environmental Sanitation and forestry. In the calendar year 2020, 500,000 tree seedlings were planted on both Gov't and government land.

Chapter eight presents information from the Department of Gender & Community Based Services This chapter shows statistics on marginalized groups or communities. The mandate of the department is to promote social protection and promotion of human right as well as empowering these groups.

Chapter nine presents information from the department of production. The production sector is comprised of five sectors namely: Agriculture, Veterinary Services, Fisheries, Entomology as well as Trade and Industry.

- Number of Households involved in Agriculture: 79,853/80,863 (98.8%)
- Ratio of Agriculture Extension workers to farmers: 1:1948 (41/79,853)

## **GLOSSARY**

<b>A nursery School</b>	A place where children are prepared for entry into primary school education.
<b>Adult</b>	A person aged 18 years and above, as per the Constitution of Uganda.
<b>Agriculture</b>	The growing of crops and rearing of animals for food, other human needs or economic gain.
<b>An orphan</b>	A child below 18 years of age who has lost either one or both parents.
<b>Asset</b>	Anything valuable that an entity owns, benefits from or has use of, in generating income.
<b>Child</b>	A juvenile. A person aged below 18 years.
<b>Child labour</b>	Work that is mentally, physically, socially and/or morally dangerous and harmful to children. Hazardous work which by its nature or the circumstances under which it is performed, jeopardises the health, safety and morals of a child. Also includes work or activities that interfere with children's school attendance.
<b>Civil Servants</b>	Employees of line ministries, teaching service, police, prison, public universities and local governments.
<b>Cohabiting</b>	A state where a man and woman are not officially married but are living together in a sexual union.
<b>Completion rate</b>	The total number of new entrants in the last grade of any education level, regardless of age, expressed as a percentage of the population at the entrance age to the last grade of that education level.
<b>Crime</b>	An unlawful act or omission punishable by law.
<b>Crime Rate</b>	The incidence of crime per 100,000 people.
<b>Damage of property</b>	The abstract measure of property not being intact, and may refer to any household item which suffered after a crime incidence.
<b>Day Care</b>	A place that looks after children between 0 - 2 years and their parents pick them in the evening.
<b>Defrauding</b>	This is the act of depriving an individual, organisation, or even a household of their money, or property through deceitful trickery or cheating methods. It is also a deliberate deception to secure unfair or unlawful gain.
<b>Divorced</b>	A condition where legally married couples legally separate for life and each stays away from the other thereafter. However, either of the two (man or woman) can re-marry.
<b>DPT</b>	A vaccine against Diphtheria, Pertussis (whooping cough) and Tetanus.
<b>Driver</b>	In relation to a motor vehicle, means a person who drives, or attempts to drive, or is in charge of a motor vehicle (including a cycle) or an instructor of a learner driver. In relation to animals,

means a person who guides cattle, in singular or in herds, or flocks, pack saddle animals on a road. But in relation to a towed vehicle, a person who drives the towing vehicle.

<b>activity</b>	Covers all market production and certain types of non-market production, including production and processing of primary products for own consumption, own-account construction (owner occupied dwellings) and other production of fixed assets for own use.
<b>Employed Persons</b>	Persons who work for wage or salary in cash or in kind or both and have a formal job attachment.
<b>Employment</b>	Restricted to only the working age population who were engaged in any activity to produce goods or provide services for pay or profit. "For pay or profit" refers to work done as part of a transaction in exchange for remuneration payable in the form of wages or salaries for time worked or work done, or in the form of profits derived from the goods and services produced through market transactions.
<b>Employment status</b>	Refers to the status of an economically active person with respect to his/her position at his/her place of work and his/her mode of remuneration.
<b>Enterprise</b>	A single legal entity or a combination of legal entities. It may also be a sole legal unit carrying out one or more activities at one or more locations. It may alternatively be several establishments.
<b>Fatal Accident</b>	An accident in which death occurs at the scene of the accident or within one year of the accident as a result of injuries sustained in the accident.
<b>Gross Domestic Product</b>	The value of goods and services produced within the economic territory of the country.
<b>Gross Enrolment Rate</b>	The ratio of pupils in primary school (regardless of age) to the country total population aged 6-12 years.
<b>Gross Enrolment Ratio</b>	Total enrolment in a specific level of education (Pre-primary, Primary, Secondary and Tertiary), regardless of age, expressed as a percentage of the eligible official school-age population corresponding to the same level of education in a given school-year.
<b>Gross Intake Rate</b>	The ratio of the pupils enrolled in primary one regardless of age to the country total population aged six years.
<b>Gross Intake Ratio</b>	The total number of new entrants in the last grade of a given level of education, regardless of age, expressed as percentage of the total population of the theoretical entrance age to the last grade of that education level.
<b>Gross Output</b>	The production value as compiled from total receipts from industrial and non-industrial goods and services in an economy, adjusted for stock changes but excluding Excise Duty and Indirect Taxes. This is Gross Output at factor cost.

<b>Growth Rate</b>	The number of people added to (or subtracted from) a population in a year due to natural increase and net migration expressed as a percentage of the population at the beginning of the time period.
<b>Health Centre II</b>	Out-patient clinic treating common diseases and offering antenatal care. It is supposed to be led by an enrolled nurse, working with a midwife, two nursing assistants and a health assistant. According to the Ugandan government's health policy, every parish is supposed to have a Health Centre II.
<b>Health Centre III</b>	Health centre with facilities which include an operation room and a section for minor surgery. It is headed by a clinical officer, offers the continuous basic preventive and curative care and provides support supervision of the community and the Health Centre II facilities under its jurisdiction. According to the Ugandan government's health policy, every sub-county is supposed to have a Health Centre III.
<b>Health Centre IV</b>	A mini-hospital that provides the kind of services found at Health Centre III, but in addition has separate wards for men, women, and children in which to admit patients. It should have a senior medical officer and another doctor as well as a theatre for carrying out emergency operations. According to the Ugandan government's health policy, every county or parliamentary constituency is supposed to have a Health Centre IV
<b>Home based child care</b>	An arrangement where a mother in the community looks after children at a cost in her premises and trains them basic skills necessary for proper upbringing.
<b>Infant Mortality Rate</b>	The number of deaths of infants under one year of age per 1,000 live births in a given period.
<b>Juvenile</b>	A person below 18 years of age (Children Statute 1997).
<b>Kerosene</b>	This is fuel used as an illuminant for lighting and in some cases for cooking.
<b>Labour force</b>	The labour force consists of all persons of working age who were either employed or unemployed
<b>Literacy rate</b>	The percentage of population aged 10 years and above that can read with understanding and write a simple sentence meaningfully in any language.
<b>Loan</b>	Money or securities supplied by one party (the lender) to a second party (the borrower) in a transaction in return for a promised future payment by the borrower. Such transactions normally include the payment of interest due to the lender as per agreed repayment schedules between the two parties.
<b>Net Enrolment Rate</b>	The ratio of pupils in primary school aged 6 – 12 to the country total population aged 6 -12 years.



<b>Net Enrolment Ratio</b>	The Enrolment of the official age-group for a given level of education (Pre-primary, Primary and Secondary) expressed as a percentage of the corresponding population.
<b>Net Intake Rate</b>	The ratio of the pupils aged six in primary one to the country total population aged 6 years.
<b>Net Intake Ratio</b>	The number of new entrants of official age expressed as a proportion of the official school entry age ( <i>3 years for pre- primary, 6 years for primary, 13 years for secondary and 19 years for tertiary</i> ).
<b>Pupil-Classroom Ratio (PCR)</b>	The average number of pupils (students) per classroom at a specific level of education in a given school year.
<b>Pupil-Stance Ratio (PSR)</b>	The average number of pupils (students) per latrine stance at a specific level of education in a given school year.
<b>Pupil-Teacher Ratio (PTR)</b>	The average number of pupils (students) per teacher at a specific level of education in a given school year.
<b>Single</b>	A man or woman who has never been married or never been in a consensual union.
<b>Skill mismatch or skill inadequate employment</b>	Skill mismatch measures the incompatibility between education and occupation. Workers whose educational attainment is above the skill requirement of their jobs are in some sense underutilized. The return on investment in their education and training is below optimum and somewhat wasted.
<b>Solid waste</b>	Any semi-solid or solid matter created by human or animal activities, and which are disposed because they are hazardous or useless.
<b>Under-utilisation</b>	An aggregate of persons who were; unemployed, in time related under-employment and potential labour force.
<b>Unemployment</b>	Persons of working age are classified as unemployed if, during a short reference period such as a day or a week, they (a) were without work, i.e. did not work for even one hour in any economic activity (paid employment, self-employment, or unpaid work for a family business or farm); (b) were available for work; and (c) had taken active steps to seek work during the past four weeks.
<b>Value Added</b>	The value of outcome when factors of production interact to produce and avail goods and services. Value added is the difference between the value of gross output and the value of intermediate inputs. Value added comprises of the following:

- Value Added Tax (VAT)** A form of consumption tax. From the perspective of the buyer, it is a tax on the purchase price. From the seller's perspective, it is a tax only on the value added to a product, material or service.
- Work** Comprises of own-use production work, employment work; unpaid trainee work, volunteer work and other forms of work. Work excludes activities that do not involve producing goods or services (e.g. begging and stealing), self-care (e.g. personal grooming and hygiene) and activities that cannot be performed by another person on one's own behalf (e.g. sleeping, learning and activities for own recreation).
- Working age** While no international standard on age limits exists, for purposes of statistical measurement, the working age population is commonly defined as persons aged 15 years and older, but this may vary from country to country.
- Youth** For statistical purposes, the United Nations defines *youth*, as those persons between the ages of 15 and 24 years, without prejudice to other definitions by Member States. In practice, however, many national statistics offices apply their own definitions of youth which often differ from the international standard. In Uganda, a youth is a person aged 18-30 years.

## GENERAL INFORMATION ABOUT THE DISTRICT

- Location: Latitude 00<sup>0</sup> 47' 21''S
- Location: Longitude 29<sup>0</sup> 56' 30'' E
- District creation 1974 from Kigezi District
- Creation of Rukungiri MC 2011
- Distance from Kampala 380Km
- Total area 1524.28 sq Km
- Land area 1445.64 sq Km
- Area of water bodies 78.64 sq Km
- Annual rainfall 800mm
- No. of subcounties 9 plus 3 divisions
- No. of town boards 4
- No. of town councils 4
- No. of municipal councils 1
- No. of parishes 80
- No. of villages 827
- No. of District councillors 24
- Proportion of Female District Councillors  $10/24 = 5/12 = 41.7\%$

### Demography as of Cencus 2014

- National population 34.6Million
- Total population 314,694
- Male population 150,016
- Female population 164,678
- Population density 219 persons per sq. Km
- Average household size 4.5 persons
- No. households 70,853
- Annual population growth rate 1.5%
- Sex ratio 91:1
- Life expectancy at birth 56 years
- Ethnic grouping Banyankole, Bahororo, Bakiga, Banyarwanda, Baganda
- Commonly spoken language Runyankole and Rukiga
- Population below poverty line 28.1%
- Arable land 1,352.2 Km<sup>2</sup>

### Education

- No. of government aided primary schools 178
- No. of private Primary schools 111
- No. of nursery schools 70
- No. of government aided secondary schools 24
- No. of private secondary schools 30

• No. of technical schools	2
• No of vocational schools	11
• No. of core primary teachers colleges	1
• No. of Nurses' training schools	2
• Primary school enrolment	50,409 (24,949 Males & 25460 Females)
• Pupil-teacher ratio	39:1
• Primary school dropout rate	1.5%
• Desk-pupil ratio	1:8
• Pupil desk deficit	450
• Pupil-classroom ratio	80:1
• Current primary classroom deficit	102
• Pupil-latrine stance ratio	60:1
• Average distance to and from school	5Km
• PLE performance Div 1 total 2014	837
• Pupil-text book ratio	3:1

### **Health**

• No. of hospitals	2 (PNFPS)
• No. of Health Centre IV's	4 Gov't & 1 PNFPS
• No. of health centre III's	9 Gov' & 7 PNFPS
• No. of health centre II's	40 Gov't & 726 PNFPS
• No. of licensed drug shops	77
• No. of allied clinics	18
• Doctor-population ratio	3 Doctors per 100,000 People
• Nurse-population ratio	7 nurses per 10,000 People
• Clinical population ratio	1 clinical per 10,000 People
• Deliveries in health facilities	56.8%
• Ratio of midwives to pregnant women	5 mid wives per 1000 Pregnant mothers per year
• Disease burden by malaria	255
• Latrines coverage	98% (Existence of latrine structure)
• Safe water coverage	70.3%
• Prevalence rate of water borne diseases	6.1%
• Infant mortality rate	30/1000 live births
• Maternal mortality	117/100,000 mothers
• Total fertility rate	5.4 Children
• Stunting	237 children per year
• Polio immunization rate	84.2%
• BCG immunization rate	100%
• Village Health teams trained	426
• HIV prevalence	5.9%
• ANC coverage	ANC 4 <sup>TH</sup> 51.6% ANC 1 <sup>ST</sup> – 93%

- Immunisation coverage DPT3 – 86.4%
- Teenage pregnancy rate 4.3%
- HIV/AIDs testing points 25
- Births with low birth weight (<2.5kg) 427

## **Socio Economic**

### **Works**

- Total length of district roads 316.7Km
- Road length in good condition 194Km
- Road length in poor condition 132.7Km
- Length of community roads 845Km
- Total length of trunk roads central Gov't 208.2Km
- Total length of tarmac roads 20.3 m

### **Community based Services**

- No. of NGOs 14
- No. of CBOs registered 867
- Literacy rate among women 77% (64,404 Females)
- No. of community development organization 867
- No. of organized women groups 89

### **Production and Marketing**

- Agricultural labour force (women) 74.7%
- Women with access/control (agricultural produce) 30%
- Women who own land 10%
- Population in subsistence agriculture 78.2%
- Population trading in agriculture produce 61.9%
- Households rearing animals 73.9%
- Households fishing 428
- Households trading in agriculture products 61.9%
- No. of cattle (Local Breeds low grade crosses) 29,093
- No of Cattle (Exotic and High Grade Crosses) 28,799
- No. of goats 73,406
- No of sheep 9,255
- No of pigs 12,332
- No of Rabbits 2,012
- No. of co-operatives 51

**District Vision**

“A prosperous population in a sustainable and secure environment by the year 2040”

**District Mission**

Service Delivery for Socio-Economic Development

**Goal**

To improve service delivery and socio-economic development for prosperity

**Strategic objectives of Rukungiri LG**

- To identify and collect sufficient revenue to ensure service delivery
- To promote democracy and accountability in the local government
- To increase the level of basic education
- To provide accessible health services
- To improve the district infrastructure e.g. roads, bridges, buildings
- To increase access to safe water and sanitation
- To empower communities to set up income generating activities (IGAs)
- To ensure sustainable management of natural resources

# CHAPTER 1: BACKGROUND INFORMATION

## 1.0 Introduction

This chapter gives background information, location, size, climate, and vegetation, geographical and other features about the district.

## 1.1 Location and Size

Rukungiri is one of the districts in the Western region of Uganda. It is bordered by Ntungamo and Mitooma districts in the East, Kabale in the South, Rubirizi in the north and Kanungu district and Democratic Republic of Congo (DRC) in the West. Rukungiri is Located at Latitude 00<sup>0</sup> 47' 21" S and Longitude 29<sup>0</sup> 56' 30" E. Rukungiri District has a total area of 1,524.28 Sq. Kms and her headquarters are situated in Rukungiri Municipal Council.

## 1.2 Historical Background

At Independence in 1962, Rukungiri District was part of the Kigezi District. In 1974, Rukungiri District was created under the auspices of taking services nearer to the people. By then it was called North Kigezi District until 1980 when the name was changed to Rukungiri District. It is one of the 14 districts that were selected in 1993 for the second phase of decentralization. Since its creation and particularly after decentralisation, the district has gone through significant transformation to establish itself on a firm ground especially with regard to improved management, planning capacity and participation of communities in the development process. In 2001, the greater Rukungiri was divided to create Kanungu district thus reducing the district to only 2 counties of Rujumbura and Rubabo.

## 1.3 Tourism in Rukungiri District

Rukungiri district is gifted with a wide range of tourism products which have the potential of increasing local revenue and benefiting the communities both socially and economically. Some of the tourism sites in Rukungiri include the following;

**Table 1.1: List of tourism sites in Rukungiri Districts**

Site	Location	Activities
Kisiizi falls	Kisiizi Parish Nyarushanje sub country	<ul style="list-style-type: none"><li>• Water falls</li><li>• Bird watching</li><li>• Hiking</li><li>• Zip lining</li><li>• Cultural monument</li><li>• Kayak on lagoon</li><li>• Generation of HEP</li></ul>
Queen Elizabeth National Park	South western rim of Queen Elizabeth National Park Rukungiri District	<ul style="list-style-type: none"><li>• Game drive</li><li>• Nature walks</li><li>• Tree climbing lions</li><li>• Birds</li><li>• Boat rides</li></ul>

		<ul style="list-style-type: none"> <li>• Camping</li> </ul>
Kigezi Wild life Reserve	Kikarara Parish Bwambara Sub country	<ul style="list-style-type: none"> <li>• Wildlife</li> <li>• Birds</li> <li>• Tree species ie fig trees</li> </ul>
Nyabugoto Cave	Nyakishoroza Parish Nyakishenyi sub country	<ul style="list-style-type: none"> <li>• Bats</li> <li>• Birds</li> <li>• Caves</li> <li>• First centre for Kibwetere and Celedonia Cult</li> </ul>
Ihimbo hot spring	Kikongi Parish, Bwambara sub country	<ul style="list-style-type: none"> <li>• Natural hot spring touring</li> <li>• Tracking of primates (colobus)</li> <li>• Nature walks</li> <li>• Hiking</li> </ul>
Minera Hot spring	Bwanga Parish, Kebisoni sub county	<ul style="list-style-type: none"> <li>• Hot spring</li> <li>• Fishing</li> <li>• Bird watching</li> <li>• Acacia trees</li> <li>• Primates</li> </ul>
Rweshama landing site	Rweshama parish Bwambara Sub Country	<ul style="list-style-type: none"> <li>• Fishing</li> <li>• Boat rides</li> <li>• Wildlife</li> <li>• Canoeing</li> </ul>
Rubaabo Hot springs	Nyabushenyi Parish Nyarushanje sub county	<ul style="list-style-type: none"> <li>• Hot spring</li> <li>• Forest walks</li> <li>• Lime stone quarry</li> <li>• Camping</li> </ul>
Lake Kimbugu	Nyabushenyi Parish Nyarushanje sub county	<ul style="list-style-type: none"> <li>• Bird watching</li> <li>• Canoeing</li> <li>• Camp site</li> </ul>
Maramagambo Forest	Bwambara sub county Rukungiri District	<ul style="list-style-type: none"> <li>• Nature walks</li> <li>• Trees species</li> <li>• Birding &amp; Wildlife</li> </ul>
Enengo Escarpment	Rwerere Parish Nyakagyeme subcountry	<ul style="list-style-type: none"> <li>• Rift valley escapements</li> <li>• Nature walks</li> <li>• Flowing Mitaano River</li> </ul>
Lake Nakasanda	Garubunda Parish Kebisoni Sub country	<ul style="list-style-type: none"> <li>• Birding</li> <li>• Canoeing</li> <li>• Camping Services</li> <li>• Nature walks</li> </ul>
Bukaaka Cold spring	Rwensigiro Villages Bwambara Sub country	<ul style="list-style-type: none"> <li>• Cold spring</li> <li>• Birds</li> <li>• Nature walks</li> </ul>
Katabushera Hills	Katabushera village Bugangari sub country	<ul style="list-style-type: none"> <li>• Magnificent scenery for nature</li> </ul>

Source: District Tourism Officer



**Table 1.2: Accommodation Facilities in Rukungiri**

<b>HOTELS</b>	<b>LOCATION</b>
Rukungiri Inn	Rwanyakasheesha hill, Rukungiri Municipality
Riverside Hotel	200 meters after Nyakibale Hospital, along Ntugamo Rd, Rukungiri District
Gesso In	Ndimbirwe Rd, Rukungiri Municipality
Stake In	Karegyesa Rd, Rukungiri Municipality
Hotel Continental	Karegyesa Rd, Rukungiri Municipality
Lake Garubunda	Garubunda Parish, Kebisoni Sub country
Heritage Country Club	Rubabo Road, Rukungiri Municipality
Sky light Hotel	Karegyesa Road, Rukungiri Municipality
Sena Grand Hotel	Republic Road Rukungiri, Rukungiri Municipality
Robathy Hotel	Republic Road Rukungiri, Rukungiri Municipality
Ijumo Resort Hotel	Rukungiri Municipal Council
Lorycon Inn	Ruruku, Ishaka Road, Rukungiri Municipality
Genesis Resort	Rwenshama Fish Landing Village at Lake Edward, Bwamabara sub county
Town view Gardens	Rukungiri Municipal Council
Maphie Hotel	Rukungiri Municipality Council
Palm Royale Hotel	Along Rukungiri-Kanungu Rd, Rukungiri Municipality
Comfort Inn	Nyarushanje Subcounty
Viruga Gardens	Rukungiri Municipal Council
Okapi hotel	1.5 kms Rukungiri-Ishaka Road Ruruku-Kagogo, Rukungiri Municipality
Genesis Hotel	Rwenshama sub country
Butagasi Guest House	Rukungiri Municipality
Lake Garubunda Resort	Garubunda Parish, Kebisoni Sub country
Jade country Resort	Bikurungu Parish, Bwambara subcounty, Rukungiri District

*Source: District Tourism Officer*

## **1.4 Geographical Features**

The District has a total area of 1,524.28 Sq. Kms, 11% of which comprises tropical high forests, 5.5% woodland, 2.6% bush land, 21.3% grassland, 52% farmland and 7.6% open water. Rukungiri District is composed of two counties of Rujumbura and Rubabo, 1 Municipal Council (Rukungiri municipality), 3 Municipal Division Councils, 4 Town Boards, 9 Subcounties, 80 Parishes and 827 Villages.

### **1.4.1 Topography**

It is characterized by undulating hills, with steep slopes and V-shaped valleys. The hill tops continually rise to over 1846 m above sea level. It lies at an altitude range of about 615 m to 1864

m above sea level. There are three distinctive topographic zones. It has plateau areas with local relief dropping to 615 m above sea level. There are three distinctive topographic zones.

#### **1.4.2 The Highland Area**

This is associated with rejuvenated landscapes. It was affected by rift valley faulting. The topography is deeply undulated with steep slopes, which occur along fault lines and extend considerable distances beyond the drainage basins. The hills characteristically encircle lowland areas. This zone includes the sub-counties of Nyarushanje and Nyakishenyi.

#### **1.4.3 The Plateau Area**

It is associated with gently undulating plains. This area gradually rises from 9234 m (Lake Level) to slightly over 1169 m near the escarpment. The change in level is due to lake terracing as the water receded due to up warping during late rift movements. This zone includes the sub-counties of Kebisoni, Buyanja, Ruhinda, Buhunga and Nyakagyeme.

#### **1.4.4 Climate**

The district has bimodal rainfall with long rains received from February to May and short rains from September to November. The mean annual rainfall ranges between 700mm and 1200mm. Recent climatic observations indicate that the rainfall pattern, distribution and amount are becoming more unpredictable and unreliable. The District is generally cool with daily temperatures ranging from 15°C to 20°C. There is no readily available data on humidity and winds

#### **1.4.5 Soils**

The soils in the district are generally sandy clay loams. The most common soil types are greyish brown, sandy loams and reddish-brown sands with sandy loams: Dark brown sandy clay loam is also common. The parent rock to these soils is Rift valley sediments and volcanic ash. Pressure due to population increase and poor methods of soil management and the land tenure system have negatively affected the soils and degradation is rampant.

#### **1.4.6 Drainage**

The district is endowed with a number of rivers and one major lake. Lake Edward is the main lake in the district where fishing activities take place at Rwenshama Fishing village. Other small lakes include Kimbugu in Nyarushanje and Lake Garubunda in Kebisoni sub-counties.

The District has both permanent and temporally wetlands (approximately 78.64 sq km). They include Ntungwa (Birara) system, Nchwera system and Lake Edward margins. There are also minor wetlands that drain into Kagera system and eventually form part of Lake Victoria drainage system.

#### **1.4.7 Mineral Resources**

The situation of mineral resources in the district is not clearly established. However, some prospecting and other activities like borehole drilling, show evidence of the presence of some minerals like iron and tin in Rujumbura, Gold, and limestone in Rubabo Counties. There is however, exploitation of clay and sand for construction purposes. Clay mining takes place mainly from Nyaruzinga in Kagunga Subcounty and sand from Bwambara subcounty. Recent exploration activities in the rift valley in Bwambara Subcounty and on Lake Edward, show prospects for oil and gas

#### **1.4.8 Vegetation (Flora)**

Land that is not under cultivation is covered by three main vegetation zones namely forests, forest/savanna mosaic and grass savanna. The medium altitude forest types are portions of Maramagambo forest in Rujumbura County and are also common in parts of Nyarushanje and Nyakishenyi in Rubabo County, although clearing for cultivation is a constant threat. Forest/Savanna mosaic are commonly found in Buyanja, Kebisoni, Nyakagyeme and parts of Nyakishenyi subcounties.

Towards Queen Elizabeth National Park in Bwambara subcounty and River Minera in Kebisoni subcounty, grass savanna is dominant. The district is host to some Forest Reserves for both natural forests and plantations. The plantation forests, which are largely eucalyptus and pine species constitute about 20% of the forests.

#### **1.4.9 Wild Life (Fauna)**

The District is one of the few in the country endowed with a great variety of fauna, found mainly in Queen Elizabeth National Park, Kigezi Wildlife Reserve and Maramagambo Forest. Human activity particularly habitat destruction, poaching and encroachment are issues of concern, as are vermin and problem animals which escape from Parks and raid crops. Management of the wildlife focuses on protected areas. Animals include Buffalos, Climbing Lions, Elephants, Uganda Kobs, Toppi and many species of reptiles, birds and other animals These form part of Tourist attractions to the District.

#### **1.4.10 Land Resources**

Like other Districts in Uganda, most people in Rukungiri District derive their livelihood from land. However, the increasing population has created pressure on the limited land resources. Land use in the District falls in five main categories namely grasslands, swamps, forests, small and large scale farming and built up area.

#### **1.4.11 Water Coverage**

The overall safe water coverage of the district is currently 74.6% at household level. While in towns, it goes to 90%. Rwerere, Kebisoni, Buyanja, Nyakagyeme, Buhunga, Bikurungu,

Rwenshama, Kisiizi and Bwanga towns are all served with piped water. Rural water supply to villages of Kakirago, Kateramo, Kagashe, Bugangari trading centre and Campbell on Katabushera gravity flow scheme was completed. The Ministry also has plans to construct bulk water system supply from Lake Edward to communities in Bwambara and Bugangari sub counties. Plans to supply Rukungiri Municipal Council with piped water from Kahengye River at the border with Ntungamo district are in progress.

## CHAPTER 2: MANAGEMENT SUPPORT SERVICES

### 2.0 Introduction

This chapter presents statistics on management and support services. It presents details on district administrative structure. Human Resources Management, the Councils, Boards and Commissions, Public Accounts Committee and land board.

### 2.1 Administrative Structure

The District is comprised into Rujumbura and Rubabo counties and Rukungiri Municipality with 9 rural Subcounties and 3 Divisions. The District constitutes of 87 parishes and 825 village councils. Rujumbura County covers most of the district area as it comprises of 5 sub counties, followed by Rubabo County, which comprises of 4 subcounties and then Rukungiri Municipality with 3 divisions. The District has 4 town councils namely: Buyanja, Kebisoni, Rwerere and Bikurungu.

The District Council is the highest political authority in the district, with 37 members under the leadership of the District Chairperson. It has a technical team headed by the Chief Administrative Officer, distributed in 8 departments. Each of the departments has a head and under every department, there are a number of Sections.

**Table 2.1: Showing Administrative units by County**

County	Sub county/Division	No. of Parishes /Wards	No. of Villages / cells
Rubio	Buyanja	8	71
	Nyakishenyi	9	115
	Nyarushanje	9	123
	Kebisoni	5	40
	Kebisoni TC	4 wards	26
	Buyanja TC	3 wards	9
Sub-total 1		38	384
Bujumbura	Bwambara	5	53
	Buhunga	6	77
	Nyakagyeme	7	73
	Bugangari	7	79
	Ruhinda	6	58
	Rwerere Town Council	3 wards	9
	Bikurungu Town Council	3 wards	11
Sub-total 2		37	360

Rukungiri	Eastern Division	4	33
Municipal council	Western Division	4	25
	Southern Division	4	26
Sub-total 3		12	84
Grand total		87	827

*Source: Planning Department*

## 2.2 Human Resource Management

**Table 2.2: Establishment and staffing status as of June 2020**

Department/Sector	Approved	Filled	Not Filled	% Gap
Chief Administrative Officer's Office	3	3	0	0
Administration	6	3	3	50
Human Resource	3	3	0	0
Statutory Bodies	5	4	1	20
Internal Audit	3	2	1	33.3
Planning	4	3	1	25
Procurement	2	2	0	0
Finance	13	12	1	7.7
Education (District Education Officer's Office)	7	6	1	14
Production	13	6	7	53.8
Trade and Industry	6	3	3	50
Primary Schools	1,695	1,515	180	10.6
Secondary Schools	513	391	122	23.8
Natural Resources	12	9	3	25
Community Services	6	4	2	33.3
Technical Services & Works	17	14	3	17.6
District Health Services	610	403	207	33.9
Sub-counties	176	146	30	17.0
Town councils	206	67	139	67.5
<b>TOTAL</b>	<b>3124</b>	<b>2596</b>	<b>528</b>	<b>16.9</b>

*Source: Office of Human resource*

### 2.3 Council, Committees, Boards, and Commissions

Rukungiri District has a total of 35 councilors comprising of 24 males and 11 female councilors and there is no vacant post in the council.

**Table 2.3: Council, Boards and Commissions**

	<b>Total</b>
No. of councilors in the district	35
No. of vacant positions in council	0
No. of executive members	5
No. of sectoral committees	3
No. of sectoral committee meetings	6
No. of council meetings	6

### 2.4 Executive committee members

**Table 2.4: Tender Board**

	2018/19	2019/20
No. of contracts committee members	4 (2 males, 2 females)	4 (2 males, 2 females)
No. of contracts committee meetings	13	15
No. of contracts committee reports	4	4
No. of firms pre-qualified	98	133
No. of contracts awarded	89	72
No. of contracts cancelled	00	00
# firms recommended for blacklisting	00	00
No. of bids received	196	266

**Table 2.5: Land Board**

No. of members on land board	3males, 2females
No. of land board meetings	4

**Table 2.6: Housing Committee**

No. of members on housing committee	4males, 2females
No. of land board meetings	4

## 2.5 District Service Commission

**Table 2.7: District Service Commission**

---

No. of DSC members (filled and Vacant)	4 Filled, 2males, 2females, 1vacant (PWD)
No. of interviews conducted	9
No. of disciplinary cases handled	2
No. of DSC reports/minutes produced	3 reports, 9 sets of minutes
No. of staff recruited, confirmed, promoted and retired	80

---

## 2.6 Public Accounts Committee (PAC)

**Table 2.8: Public Accounts Committee (PAC)**

---

No. of members on PAC	5 (4 males, 1 female)
No. of PAC meetings	6
No. of PAC reports	4

---



## CHAPTER 3: Demographic and Socio-Economic Characteristics

### 3.0 Introduction

This chapter presents information from the department of finance and planning. It focuses on the population and social-economic characteristics of the district, the planning & budgeting process, the available revenue sources, and the expenditures in the previous financial year.

The Finance department is composed of 6 sectors which include; Audit, the Procurement Unit and Planning Unit. It is one of the biggest departments in the District whose objectives are to;

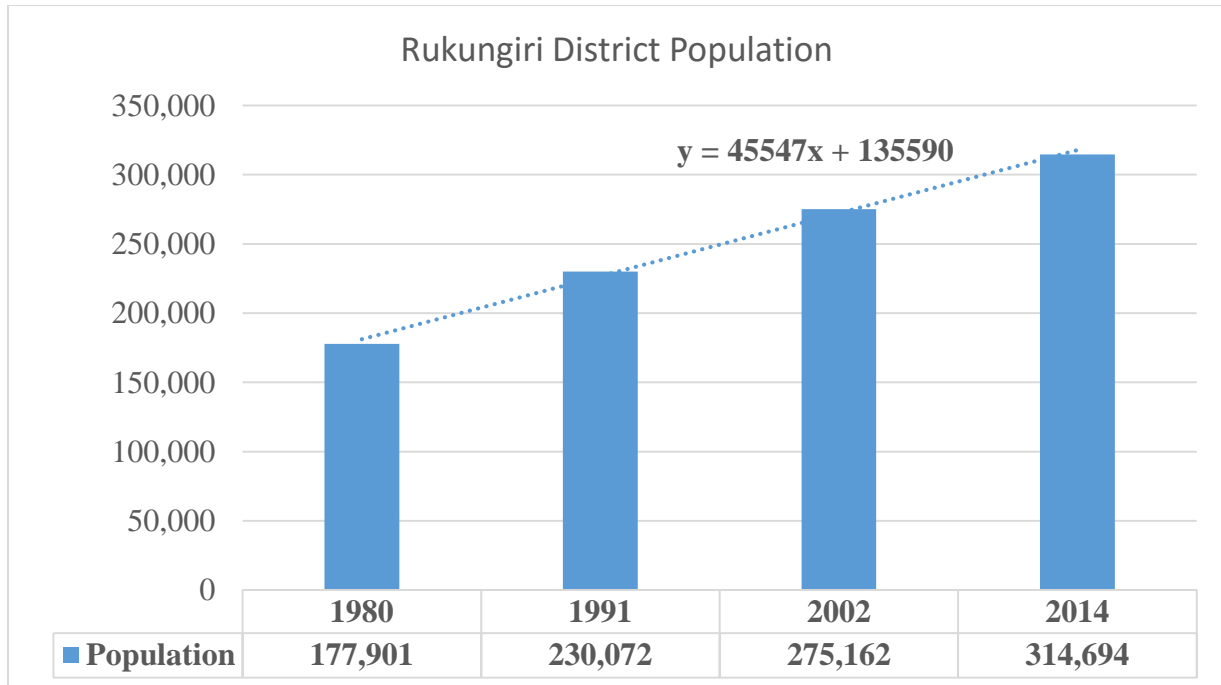
- Identify and expand the revenue base;
- build Finance and Management Capacity at district level; and
- Strengthen Data Management systems, Revenue VRS and to influence demographic trends & patterns in a desirable direction.

### 3.1 Population Characteristics

To formulate present and future development programmes, the district needs to know the size, quality, distribution and growth of its population. Population censuses are the main sources of demographic data in general and information on population size, distribution and growth rate in particular. Other sources may include various surveys, Birth and Death Registration and Administrative Records.

#### 3.1.1 Population size and Growth Rate

**Figure 3.1: Total Population and Growth rates as Compared to the western Region by year**



Source: UBOS

### 3.1.2 Population Distribution

The distribution of a population by age and sex is among the basic types of information needed for planning. Sex and age composition of a population has significant implications for the reproductive potential, human resource, school attendance, family formation, health care and other service delivery in general.

The National Population and Housing Census was conducted in 2014 by UBOS and the provisional results were released. The report provided population figures by sex by sub-county for all the districts in the country. The provisional results for this district are indicated in Table 3.2.

Further data processing and analysis is on-going to generate a more detailed report that will provide information on other indicators up-to the lowest level. Analysis of educational requirements, labour force projections, household composition and migration for example, would not be complete without considering information on age and sex.

**Table 3.1: Population by sex by sub county**

No.	County	Sub-county	Census 2014			Projection of 2020		
			Males	Females	Total	Males	Females	Total
1	Rubabo	Buyanja SC	15,108	15,996	31,104	16,716	17,699	34,415
2	Rubabo	Kebisoni SC	10,684	11,758	22,442	11,821	13,009	24,831
3	Rubabo	Nyakishenyi SC	15,911	18,222	34,133	17,604	20,161	37,766
4	Rubabo	Nyarushanje TC	20,874	24,009	44,883	23,096	26,564	49,660
5	Rubabo	Buyanja TC	2,407	2,624	5,031	2,663	2,903	5,566
6	Rubabo	Kebisoni TC	1,706	1,800	3,506	1,888	1,992	3,879
7	Rujumbura	Bugangari SC	14,388	15,554	29,942	15,919	17,209	33,129
8	Rujumbura	Buhunga SC	10,326	11,762	22,088	11,425	13,014	24,439
9	Rujumbura	Bwambara SC	11,843	12,136	23,979	13,104	13,428	26,531
10	Rujumbura	Bikurungu TC	2,357	2,539	4,896	2,608	2,809	5,417
11	Rujumbura	Nyakagyeme SC	13,451	14,398	27,849	14,883	15,930	30,813
12	Rujumbura	Rwerere TC	1,930	2,069	3,999	2,135	2,289	4,425
13	Rujumbura	Ruhinda SC	12,099	13,704	25,803	13,387	15,163	28,549
14	Rukungiri MC	Eastern Divison	5,993	6,292	12,285	6,631	6,962	13,593
15	Rukungiri MC	Southern Division	4,318	4,896	9,214	4,778	5,417	10,195
16	Rukungiri MC	Western Division	6,621	6,919	13,540	7,326	7,655	14,981
<b>Total</b>			<b>150,016</b>	<b>164,678</b>	<b>314,694</b>	<b>165,983</b>	<b>182,205</b>	<b>348,188</b>

Source: UBOS 2014

### 3.1.3 Population Density

Population density refers to the number of people per square kilometre. Rukungiri district has a total area of 1524.28 sq.km and land area of 1445.64sq km. Therefore, the population density was 218 persons per sq.km of land in 2014 year. The population density increased from 218 persons per sq.km in the year 2014 to 241 persons per sq.km in the year 2020.

### 3.1.4 Urbanization rates and levels

Urbanization is defined as the increase in the proportion of the population living in the urban area. However, the definition of urban areas has been changing over time. The 2002 and 2014 censuses defined urban areas as only the gazetted one while the earlier censuses included un gazetted urban centres with more than 1000 people as part of the urban population

**Table 3.2: Population Distribution by Rural – Urban**

Area	Population	Percentage
Rural	262,223	83.3
Urban	52,471	16.7
<b>Total</b>	<b>314,694</b>	<b>100</b>

*Source: NPHC 2014, UBOS*

### 3.1.5 Average Household size

A Household is defined as a group of people who normally eat and leave together. Household composition is a key variable for determining demographic characteristics of a population. Household size refers to the number of occupants of a household.

**Table 3.3: Average household size by sub-county**

Sub County /Town Council/ Division	CENSUS 2014			UNDER THE NET CAMPAGN, MoH 2020		
	# HHS	Population	HH size	# HHS	Population	HH size
Buyanja	6,626	31,104	4.7	8,415	45,945	5.5
Buyanya TC	1,145	5,031	4.4	1,485	7,785	5.2
Kebisoni	4,789	22,442	4.7	3,330	19,604	5.9
Kebisoni TC	847	3,506	4.1	3,487	19,700	5.6
Nyakishenyi	7,482	34,133	4.6	10,701	47,184	4.4
Nyarushanje	9,702	44,883	4.6	11,919	60,468	5.1
<b>Rubabo County</b>	<b>30,591</b>	<b>141,099</b>	<b>4.6</b>	<b>39,337</b>	<b>200,686</b>	<b>5.1</b>
Bugangari	6,670	29,942	4.5	5,443	22,821	4.2
Buhunga	4,969	22,088	4.4	5,160	30,638	5.9

Bwambara	5,332	23,979	4.5	5,240	33,091	6.3
Bikurungu TC	1,017	4,896	4.8	1,294	7,500	5.8
Nyakagyeme	6,241	27,849	4.5	6,898	35,562	5.2
Rwerere TC	953	3,999	4.2	1,119	5,295	4.7
Ruhinda	5,644	25,803	4.6	5,501	27,249	5.0
<b>Rujumbura County</b>	<b>30,826</b>	<b>138,556</b>	<b>4.5</b>	<b>30,655</b>	<b>162,156</b>	<b>5.3</b>
Eastern Division	2,703	12,285	4.5	3,449	16,753	4.9
Southern Division	2,103	9,214	4.4	3,258	15,343	4.7
Western Division	3,312	13,540	4.1	4,164	21,839	5.2
<b>Rukungiri Mun.</b>	<b>8,118</b>	<b>35,039</b>	<b>4.3</b>	<b>10,871</b>	<b>53,935</b>	<b>5.0</b>
<b>District (Total)</b>	<b>69,535</b>	<b>314,694</b>	<b>4.5</b>	<b>80,863</b>	<b>416,777</b>	<b>5.2</b>

Source: NPHC UBOS 2014, and MoH 2020

### 3.2 Socio-Economic Characteristics

The socio-economic characteristic entails the wellbeing of the community. It includes the housing conditions, household assets, incomes and outstanding loans, household expenditure, welfare indicator and cultural participation of household members.

#### 3.2.1 Housing conditions by type of house

Housing is one of the basic human needs that have a profound impact on the health, welfare, social attitude and economic productivity of the individual. It is also one of the best indications of the person's standard of living and his/her place in society.

This section provides information on the housing conditions of the population, household sanitation, assets and amenities available to the household and general household welfare.

**Table 3.4: Type and Construction materials of the dwelling Units**

Status of Dwelling Unit	# Households	Percentage
Semi-Permanent	58,318	83.9%
Temporary	2,590	3.7%
Dwelling Units constructed by permanent roof materials	66,869	96.2%
Dwelling Units constructed using permanent wall materials	10,453	15.0%
Dwelling Units constructed using permanent floor materials	19,331	27.8%

Source: NPHC, 2014

### 3.3: Planning and Budgeting Process

The Finance department is composed of 6 sectors which include Audit, the Procurement Unit and Planning Unit among others. It is one of the biggest departments in the District whose objectives are to;

- Identify and expand the revenue base:
- Build Finance and Management Capacity at district level; and
- Strengthen Data Management systems, Revenue VRS and to influence demographic trends & patterns in a desirable direction.

#### 3.3.1 Budgetary Allocations to Departments

**Table 3.5: Budgetary allocations by departments for FY 2019/20**

<b>Department</b>	<b>Budget Allocation</b>	<b>(%) share</b>
Administration	6,044,636,956	15.2
Finance	364,247,850	0.9
Statutory Bodies	821,287,065	2.1
Production	1,163,341,740	2.9
Health	6,496,171,659	16.4
Education	22,239,373,179	56.0
Works	1,304,370,868	3.3
Natural Resources	280,744,158	0.7
Community Based Services	242,487,551	0.6
Planning	118,374,532	0.3
Internal Audit	76,722,123	0.2
Trade, Industry & Local Dev't	41,771,324	0.1
Transfers to LLG	351,172,999	0.9
Transfers to Town Council	135,469,935	0.3
<b>GRAND TOTAL</b>	<b>39,680,171,939</b>	<b>100</b>

*Source: District Budget for FY 2019/20*

### 3.3.2: Revenue sources by Amount

**Table 3.6: Rukungiri District Revenue sources for four financial years**

Financial Year	2016/17	2017/18	2018/19	2019/20
Local revenue	357,873,848	354,539,275	600,887,571	659,597,261
Un conditional grants	2,917,391,203	3,146,971,790	3,132,591,609	3,700,407,065
Conditional grants	24,155,322,194	24,931,550,430	25,874,059,969	33,863,498,026
Other grants	1,526,970,424	969,32,006	3,609,407,468	1,119,848,693
Donor grants	161,797,874	30,980,237	0	332,911,920
<b>Total</b>	<b>29,119,355,543</b>	<b>28,464,074,707</b>	<b>29,607,550,226</b>	<b>39,676,262,965</b>

*Source: District Finance Department*

### 3.3.3 Sectoral expenditure

**Table 3.7: Estimated and Actual Expenditure for FY 2019/20**

Sector	Estimated	Actual Expenditure	Percentage
Administration	6,708,933,737	6,531,279,890	97.4
Finance	382,592,199	364,247,850	95.2
Statutory Bodies	846,465,863	821,287,065	97.0
Production	1,168,452,387	1,163,341,740	99.6
Health	7,248,631,243	6,496,171,659	89.6
Education and sports	22,272,579,846	22,239,373,179	99.9
Works	1,406,396,094	1,304,370,868	92.7
Natural Resources	303,406,429	280,744,158	92.5
Community Based Services	733,442,365	242,487,551	33.1
Planning	126,365,502	118,374,532	93.7
Internal Audit	87,681,248	76,722,123	87.5
Trade, Industry & Local Dev't	42,457,645	41,771,324	98.4
<b>GRAND TOTAL</b>	<b>41,327,404,558</b>	<b>39,680,171,939</b>	<b>96.0</b>

*Source: Rukungiri District Final Accounts*

## CHAPTER 4: HEALTH SERVICES

### 4.0 Introduction

The Department of Health is headed by the District Health Officer whose mandate is guided by the District 5-Year Strategic Plan that focuses on the achievement of equity through increased access to Minimum Health Care Package (MHCP), Quality care, efficiency accountability and transparency.

The overall goal of the sector is to provide good quality services to the people of Rukungiri district so as to make them attain good standards of health in order to live a healthy and wealthy population in sustainable and secure environment. The sector objective is to reduce morbidity and mortality from the major causes of ill health and premature health and disparities therein". Rukungiri district has 94 Health Units of different categories both Government and NGOs with 4 Gov't HCIVs and each having two medical doctors. The district lacks a government Hospital which makes it difficult for people to access services and it requires quick attention at all levels.

### 4.1 Health Infrastructure

This section classifies the distribution of health facilities within the district.

**Table 4.1: Health infrastructure (categories)**

Category	Ownership		Total
	Government	PNFP	
Hospital	0	2	2
H/C IV	4	1	5
H/C III	11	9	20
HC II	40	27	67
<b>Total</b>	<b>55</b>	<b>39</b>	<b>94</b>

*Source: DHO's Office*

**Table 4.2: Number of Health Units**

Type	Number
Private pharmacies	4
Drug shops	69
Clinics	20
Allied clinics	2

*Source: DHO's Office*

## 4.2 Accessibility to health Services

This section looks at the distance to access health facilities within a community by the household

### 4.2.1 Distance to the nearest Health Unit

**Table 4.3: Distance to Nearest Health facility of Households by Sub -county**

Sub-county	Upto 5kms	Over 5kms
Buyanja	98%%	2%
Buyanya Town Council	100%	0%
Kebisoni	98%%	2%
Kebisoni Town Council	100%	0%
Nyakishenyi	90%	10%
Nyarushanje	99%	1%
Bugangari	80%	20%
Buhunga	70%	30%
Bwambara	85%	25%
Bikurungu Town council	100%	0%
Nyakagyeme	90%	10%
Rwerere Town Council	50%	50%
Ruhinda	70%	30%
Eastern Division	100%	0%
Southern Division	100%	0%
Western Division	100%	0%

*Source: DHO'S Office*

### 4.2.2 Health Services Accessibility indicators

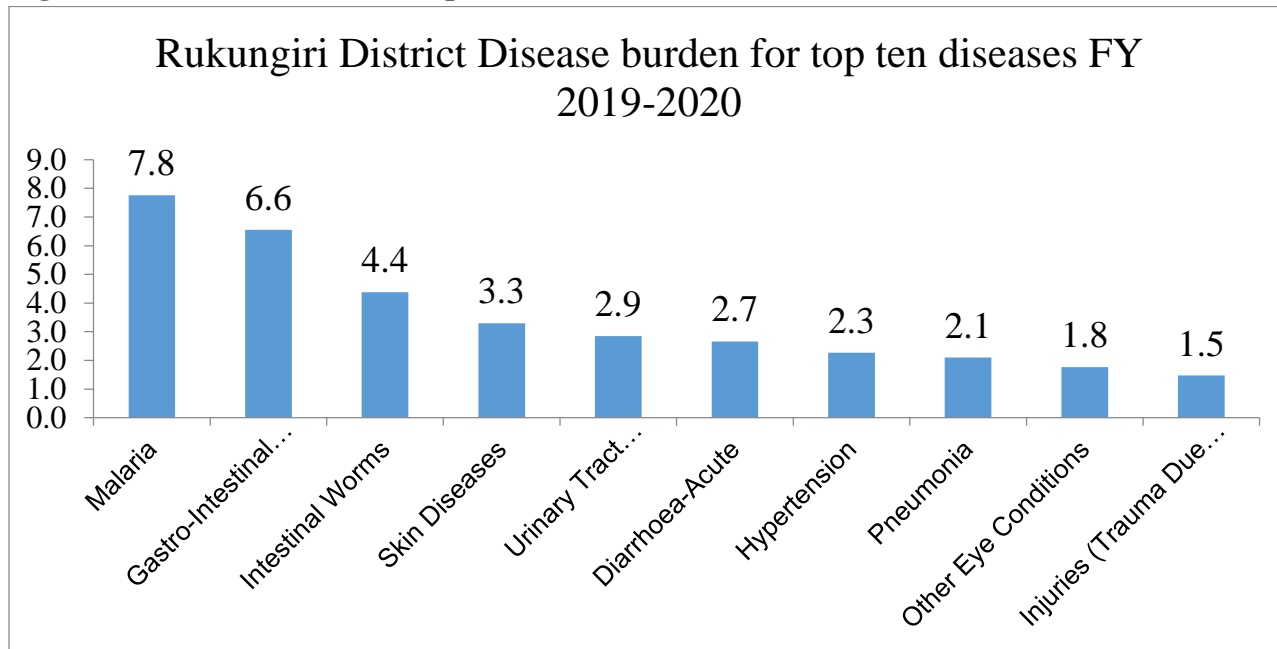
- Average Population served by each health unit: 3597 people
- Percentage of population within 5km radius of health unit: 95.3%
- Number of licensed private clinics: 69
- Practicing Doctor: population ratio: 12.4 per 100,000 People
- Nurse: Population ratio: 9.1 per 10,000 People
- Clinical Officer: Population ratio: 1.8 per 10,000 People
- OPD Utilization: 1.4
- Deliveries in health facility: 71.2
- Midwives: pregnant women (15-49) ratio: 5.5 per 1000 mothers
- Number of mothers receiving complete antenatal services 9837



### 4.3 Morbidity and cause of ill health

This section details the frequency of disease, illness, injuries, and disabilities in a population within the district

**Figure 4.1: Disease burden of top ten diseases**



Source: HMIS annual report FY 2019-2020

### 4.4 Health Manpower

This section categorizes the staffing in the district within a health sector with intentions of determining the manpower gaps within the health sector.

**Table 4.4: Staffing in District Health Office**

Cadre	Approved	Filled	Not Filled
District Health Officer	1	1	0
Asst. District Health Officer (Environmental Health)	1	0	0
Asst. District Health Officer (MCH)	1	1	0
Principal Health Inspector	1	1	0
Senior Health Educator	1	0	1
Bio -Statistician/Health Information Scientist	1	1	0
Cold Chain Technician	1	1	0
Stenographer Secretary	1	1	0
Stores Assistant	1	1	0
Office Attendant	1	2	0
Driver	1	2	0

Source: DHO's Office

**Table 4.5: Staffing in Government Health Units HC IV**

<b>Service Provider category</b>	<b>Approved</b>	<b>Filled</b>	<b>Not filled</b>
Senior Medical Officer	4	1	3
Medical Officer	4	7	0
Senior Nursing Officer	4	3	1
Public Health Nurse	4	2	2
Nursing Officer (Nursing)	4	4	0
Nursing Officer (Midwifery)	4	2	2
Nursing Officer (Psychiatry)	4	4	0
Enrolled Psychiatric Nurse	4	3	1
Enrolled Nurse	12	14	0
Enrolled Midwife	12	20	0
Nursing Assistant	20	6	14
Clinical Officer	8	8	0
Ophthalmic Clinical Officer	4	2	2
Health Inspector	8	2	6
Public Health Dental Officer	4	4	0
Laboratory Technician	4	4	0
Assistant Entomological Officer (Medical)	4	2	2
Assistant Health Educator	4	1	3
Anesthetic Officer	4	2	2
Anesthetic Assistant	4	3	1
Theatre Assistant	8	5	3
Laboratory Assistant	4	5	0
Cold Chain Assistant	4	4	0
Health Assistant	4	3	1
Dispenser	4	0	4
Accounts Assistant	4	4	0
Stores Assistant	4	4	0
Health Information Assistant	4	4	0
Office Typist	4	0	4
Driver	4	3	1
Askari	12	8	4
Porter	12	7	5

*Source: DHO's Office*

**Table 4.6: Staffing in Government Health Centre III**

<b>Service Provider category</b>	<b>Approved</b>	<b>Filled</b>	<b>Not Filled</b>
Senior Clinical Officer	10	6	4
Clinical Officer	10	6	4
Laboratory Technician	10	3	7
Laboratory Assistant	10	13	0
Health Assistant	10	8	2
Nursing Officer (Nursing)	10	6	4
Enrolled Midwife	20	24	0
Enrolled Nurse	30	26	4
Nursing Assistant	30	10	20
Health Information Assistant	10	9	1
Askari	20	7	13
Porter	20	14	6

*Source: DHO's Office*

**Table 4.7: Staffing in Government Health Centre II**

<b>Service Provider category</b>	<b>Approved</b>	<b>Filled</b>	<b>Not filled</b>
Enrolled Nurse	38	43	0
Enrolled Midwife	38	0	38
Nursing Assistant	76	41	35
Health Assistant	38	1	37
Askari	76	15	61
Porter	76	31	45

*Source: DHO's Office*

#### **4.5 Safe Water Coverage**

This section will cover the percentage of people within a reasonable walking distance (1.5km for rural and 0.2km for urban) to an improved water source. A reliable water source is one capable of supplying its beneficiaries, a minimum of 20 litres per capita per day.

**Table 4.8: Distance of households to nearest Water Source by sub-county**

<b>Sub-county</b>	<b>Upto 5kms</b>	<b>Over 5kms</b>
Buyanja	95%	5%
Buyanya Town Council	95%	5%
Kebisoni	95%	5%
Kebisoni Town Council	95%	5%
Nyakishenyi	95%	5%
Nyarushanje	95%	5%
Bugangari	95%	5%
Buhunga	95%	5%
Bwambara	77%	23%
Bikurungu Town council	77%	23%
Nyakagyeme	95%	5%
Rwerere Town Council	95%	5%
Ruhinda	95%	5%
Eastern Division	95%	5%
Southern Division	95%	5%
Western Division	95%	5%

*Source: District Water office*

Note: The district functionality status of water sources is at 86%, management committees is 89% with gender balance of 90%

#### **4.6 Latrine Coverage**

This section will include the number of household within a community that have access to toilet facilities. It also looks at the type of latrine owned by the household.

**Table 4.9: Latrine coverage for 2019/20**

Sub county	Latrine Facility Coverage				
	Total HH	HH with Improved latrines	HH with Unimproved latrines	No latrines	%ge (2019/20)
Buyanja	6,826	4,096	2,730	68	99.1
Kebisoni	4,989	2,993	1,996	100	98.0
Nyakishenyi	7,682	4,609	3,073	195	97.5
Nyarushanje	9,902	5,941	3,961	248	97.7
Bugangari	6,870	4,142	2,728	98	99.4
Buhunga	5,169	3,101	2,068	124	97.2
Bwambara	6,549	3,929	2,620	261	96.1
Nyakagyeme	7,394	4,436	2,958	146	98.6
Ruhinda	5,844	3,506	2,338	136 S	97.4

Source: DHOs office

**Table 4.10: Percentage distribution of toilet facilities by type2**

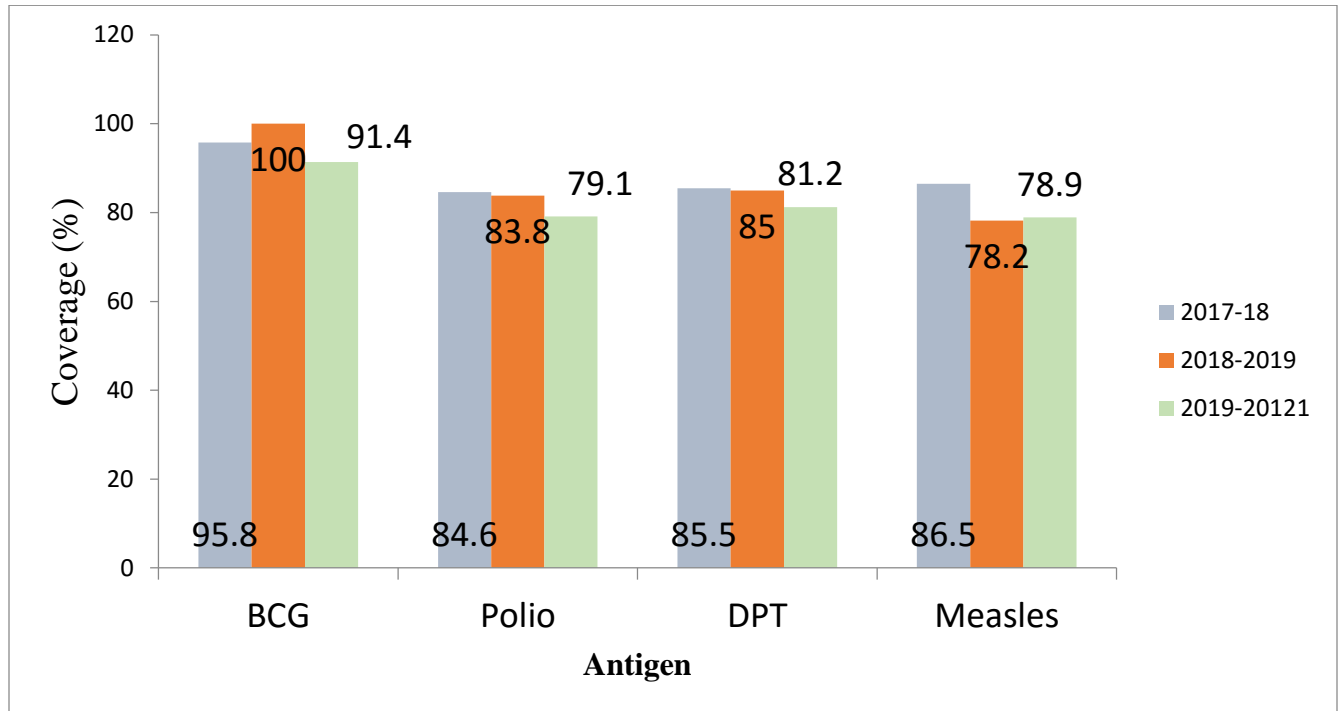
Type of toilet facilities	%age
Covered pit latrine	97.5%
VIP Private	0.5%
Uncovered pit latrine	1.5%
Flush toilet	0.5%

Source: DHOs office

#### 4.7 Immunization coverage during 2019/20

- Percentage coverage of BCG: 91.4%
- Percentage coverage of Polio: 79.1%
- Percentage coverage of DPT: 81.2%
- Percentage coverage of Measles: 78.9%

**Figure 4.2: Percentage Coverage of Antigen by financial year**



#### 4.8 Drug Inspection

Drug Inspection is important during the provision of health services in order to;

- provide safe, good quality, efficacious medicines and medical supplies to the general public in both public and private sectors.
- Promote proper and rational use of drugs, records management among health workers through support supervision, on job training and sensitization on compliance with National Drug Policy and Authority Act and National Standard Clinical Guidelines.

#### 4.9 Tuberculosis, Leprosy and Onchocerciasis

##### Introduction

According to the Annual Health Sector Performance Report 2019/2020 by Ministry of Health, the National Level Tuberculosis treatment success rate was 79% compared to 72.3% for the District.

During the same period, the following number of patients was registered in the district;

- Patients suffering from Leprosy: 0
- Patients suffering from Onchocerciasis: 0

#### 4.10 Maternal and Child Health (MCH)

The section gives information relating to maternal and child health indicators for 2019/2020. The following are highlighted:

- Number of mothers receiving antenatal: 49,126
- Number of mothers receiving post natal services: 26,262
- Number of supervised deliveries by skilled personnel: 11,761
- Number of mothers practicing family planning: 39,356
- Infant mortality rate: 18/1000 live births
- Under 5 mortality rate: 11/1000 live births
- Maternal mortality rate: 86/100,000 live births

#### 4.11 AIDS control (Prevalence, Control and Treatment)

##### Introduction

According to the Health Sector Strategic Plan(HSSPIII), HIV/AIDS is one of the communicable disease that account for over half of the total burden of disease are leading cause of ill health and mortality in Uganda. The overall objective for the communicable diseases cluster is to reduce the prevalence and incidence of communicable diseases by atleast 50 percent as per the MDGs and NDP target.

- HIV/AIDS Prevalence Rate 3.6%

##### 4.11.1 Number of HIV Counselling Centres

**Table 4.11: Coverage of HIV/AIDS Counselling and Testing (HCT) services**

Indicator	Coverage
No and % of Health units up to HCII that have integrated HCT	29 out of 94 (31%)
Stock out of HIV test kits	10/94 (10.6%)
Average no HCT outreaches per month	67% coverage
% age of people who demand for HCT services and are counselled	95.2%
%age that received HCT results	98%

*Source: DHO's Office*

##### 4.11.2 HIV/AIDS Counselling and Testing (HCT) Sites

The distribution of HIV/AIDS counselling and testing sites is important in ascertaining the level of accessibility of this health service within the district. Table 4.17 below indicates the distribution of HCT services by facility by location.

**Table 4.12: Distribution of HCT Services by facility by location**

Name of facility	Category	County	Subcounty	Ownership
Buyanja HC III	HCIII	Rubabo	Buyanja TC	Gov't
Bwambara HC III	HCIII	Rujumbura	Bwambara	Gov't
Rwenshama HCIII	HCIII	Rujumbura	Bwambara	Gov't
Rwengiri HC III	HCIII	Rujumbura	Bugangari	PNFP
Bugangari HC IV	HCIV	Rujumbura	Bugangari	Gov't
Burombe HC III	HCIII	Rujumbura	Ruhinda	PNFP
Ruhinda HC III	HCIII	Rujumbura	Ruhinda	Gov't
Ndama HC III	HCIII	Rubabo	Kebisoni	PNFP
Bikurungu HC III	HCIII	Rujumbura	Bikurungu TC	Gov't
Burama HCII	HCIII	Rujumbura	Bikurungu TC	PNFP
Cou Kisiizi Hospital	HOSPITAL	Rubabo	Nyarushanje	PNFP
Kisiizi HC III	HCIII	Rubabo	Nyarushanje	Gov't
Nyarushanje HC III	HCIII	Rubabo	Nyarushanje	PNFP
Buhunga HC IV	HCIV	Rujumbura	Buhunga	Gov't
St. Sabena HC II	HCII	Rujumbura	Buhunga	Private
Rusheshe HCIII	HCIII	Rujumbura	Buhunga	Private
Kibirizi HC III	HCIII	Rujumbura	Buhunga	PNFP
Nyakagyeme HC III	HCIII	Rujumbura	Nyakagyeme	Gov't
Rukungiri Police HC II	HCII	Municipality	Estern Division	Gov't
Karoli Lwanga (Nyakibale) Hospital	HOSPITAL	Municipality	Southern Division	PNFP
Rwakabengo HC III	HCIII	Municipality	Southern Division	Gov't
Kebisoni HC IV	HCIII	Rubabo	Kebisoni TC	Gov't
Nyakishenyi HC III	HCIII	Rubabo	Nyakishenyi	Gov't
Nyakishenyi Comm medical HCIII	HCIII	Rubabo	Nyakishenyi	PNFP
Nyakishenyi NGO HCIII	HCIII	Rubabo	Nyakishenyi	PNFP
TASO Rukungiri Special Clinic	HCII	Municipality	Estern Division	PNFP
North Kigezi HC IV	HCIV	Municipality	Estern Division	PNFP
Rukungiri HC IV	HCIV	Municipality	Estern Division	Gov't
Kadoth Clinic HCII	HCII	Municipality	Estern Division	Private

## 4.12 Prevention of Mother to Child Transmission of HIV/AIDS

### 4.12.1 HIV Counselling and Testing

- Expected number of pregnancies: 16,545
- Number of new ANC clients at PMTCT sites: 13,848
- Number of pregnant mothers' pre-test counseled: 12,761
- Number of pregnant mothers tested for HIV: 12,761
- Number of pregnant women tested HIV positive: 191
- Number of partners tested for HIV: 2,838
- Number of partners tested HIV positive: 47



#### **4.12.2 Anti-retroviral Drug Administration**

- Number of HIV positive pregnant women received NVP only: 163
- Number of positive pregnant women receiving Triple therapy (ART): 195

#### **4.12.3 Labour and Delivery care**

- Total number of deliveries: 11,761
- Number of HIV Positive deliveries: 689
- Number swallowed ARVs for prophylaxis: 350
- Number of HIV positive deliveries on HAART: 689
- Number of infants received ARV prophylaxis: 647

#### **4.12.4 HIV testing for children aged 18 months to 5 years born to HIV positive mothers**

- Number of infants born to HIV positive mothers tested for HIV: **755**
- Number of children born to HIV positive mothers tested HIV positive: **08**

## CHAPTER FIVE: EDUCATION SERVICES

### 5.0 Introduction

The Department of Education is charged with overseeing the implementation of the district and National education policies and plans. It also monitors and evaluates the performance of the education system and school operations to keep required standards within the district. The areas of focus include teachers, pupils, school facilities and parents.

The Department also seeks to strengthen the institutional frame work for the management of schools and assurance of accountability of public resources in education programmes. The department is one of the best funded sectors in the district. The District Council equally joins the Government to promote education for all its citizens in partnership with parents and others members of the community. As such, the Government's Education policy is to promote quality basic education by improving access by girls and boys, equity and retention in all Primary schools and other levels of learning.

### 5.1 Educational Institutions

Educational institution is any institution whose sole or main purpose is the provision of education and such institution must be normally accredited or sanctioned by some public authority.

#### 5.1.1 Distance to the nearest primary school

**Table 5.1: Distance of households to nearest primary school by sub-county**

Sub-county	Upto 5kms	Over 5kms
Buyanja	100%	0%
Buyanya Town Council	100%	0%
Kebisoni	100%	0%
Kebisoni Town Council	100%	0%
Nyakishenyi	100%	0%
Nyarushanje	100%	0%
Bugangari	100%	0%
Buhunga	100%	0%
Bwambara	100%	0%
Bikurungu Town council	100%	0%
Nyakagyeme	100%	0%
Rwerere Town Council	100%	0%
Ruhinda	100%	0%
Eastern Division	100%	0%
Southern Division	100%	0%
Western Division	100%	0%

Source: Education Department

### 5.1.2 Number of school going age children

**Table 5.2: School Going Age by gender**

Level of Education	2017/18	2018/19	2019/20		Total
	Total	Total	Male	Female	
Primary	59,179	50,691	24,949	25,460	50,409
Secondary	14,592	15,043	8,168	8,168	16,091
Post-Secondary	424	462	235	242	477

*Source: Education Department*

### 5.1.3 Number of Primary schools

**Table 5.3: Number of primary schools by ownership by Sub-county**

Sub-County	Govt Aided	Private	Total
Buyanja	16	8	24
Buyanya Town Council	5	4	9
Kebisoni	15	4	19
Kebisoni Town Council	3	3	6
Nyakishenyi	21	12	33
Nyarushanje	25	17	42
Bugangari	13	9	22
Buhunga	14	8	22
Bwambara	10	6	16
Bikurungu Town council	2	2	4
Nyakagyeme	20	4	24
Rwerere Town Council	2	2	4
Ruhinda	17	11	28
Eastern Division	6	4	10
Southern Division	4	6	10
Western Division	5	11	16
<b>Total</b>	<b>178</b>	<b>111</b>	<b>289</b>

*Source: Education Department*

### 5.1.4 Secondary schools

**Table 5.4: Number of Secondary schools by ownership by Sub-county**

Sub-County	Govt Aided	Private	Total
Buyanja	3	7	10
Kebisoni	2	3	5
Nyakishenyi	2	1	3
Nyarushanje	3	5	8
Bugangari	1	0	1
Buhunga	2	1	3
Bwambara	1	1	2
Nyakagyeme	2	4	6
Ruhinda	3	1	4
Eastern Division	2	1	3
Southern Division	1	3	4
Western Division	2	3	5
<b>Total</b>	<b>24</b>	<b>30</b>	<b>54</b>

*Source: Education Department*

### 5.1.5 Other Educational Institutions

A part from primary schools and secondary schools, the district has other educational institutions (for example pre-primary, Teachers training colleges, Technical colleges and Vocational schools) Table 5.4 below shows the different Education institutions in the district by ownership and level

**Table 5.5: Other Educational Institutions by ownership**

Institution	Ownership	
	Government	Private
Pre Primary	0	70
Teacher Training Colleges	1	0
Vocational	0	11
Technical Schools	2	0
Universities	0	0

*Source: Education Department*

## 5.2 Infrastructure

**Table 5.7: Available infrastructure in schools**

Indicator Name	District	Municipality
Number of permanent classrooms	972	316
Number of desks	11,344	4,203
Number of staff houses	183	35
Number of temporary classrooms	486	10

*Source: Education Department*

## 5.3 Staffing levels

**Table 5.8: Staffing Levels**

	District			Municipality		
	Filled		Gap	Filled		Gap
	Male	Female		Male	Female	
<b>A Primary Education</b>						
1. Number of teachers	756	700	239	101	139	0
2. Number of support staff				22	28	0
<b>B Secondary Education</b>						
1. Number of teachers	229	55		60	112	0
2. Number of support staff	21	13		51	52	0

*Source: Education Department*

## 5.4 Enrolment and enrolment ratios – primary and Secondary (2019/20)

**Table 5.9: No. of Teachers and Pupils by Gender in Government Aided Primary Schools**

Sub-county	Teachers			Pupils		
	Male	Female	Total	Girl	Boy	Total
Buyanja	76	134	210	3,313	3,275	6,588
Kebisoni	84	88	172	2,850	2,858	5,708
Nyakishenyi	106	53	159	3,261	3,090	6,351
Nyarushanje	117	106	223	3,615	3,717	7,332
Bugangari	74	41	115	2,486	2,423	4,909
Buhunga	67	74	141	2,322	2,381	4,703
Bwambara	86	32	118	2,421	2,399	4,820
Nyakagyeme	70	109	179	2,906	2,644	5,550

Ruhinda	76	63	139	2,906	2,644	5,550
Eastern Division	36	42	78	992	907	1,899
Southern Division	25	23	48	670	716	1,386
Western Division	38	22	60	843	830	1,673
<b>Total</b>	<b>855</b>	<b>787</b>	<b>1,642</b>	<b>28,585</b>	<b>27,884</b>	<b>56,469</b>

*Source: Education Department*

**Table 5.10: Number of Secondary School Teachers and students by School (2019/20)**

<b>Name of school</b>	<b>Number of students</b>	<b>Number of Teachers</b>	<b>Teacher to Student Ratio</b>
St Michael H/S	462		
Nyabiteete S.S	530	14	1:38
St Paul's Vocational S.S Buyanja	724	21	1:34
Buyanja Grammar Sch.	607		
Kyamakanda S.S	787	30	1:26
St Anthony Mabanga S.S	462		
Bishop Ruhindi Kebisoni HS	364	16	1:23
Blesses P.V.S.S	588		
St Jerome S.S Ndama	1452	30	1:48
Nyakishenyi High Sch.	200	6	1:33
St Mathias Nyakishenyi Voc.Sch.	652	8	1:82
Nyarushanje High School	194		
Rukungiri Voc.S.S Karukaata	89	6	1:15
Rubirizi S.S	309	15	1:21
Bwanga S.S	632	19	1:33
St Peter's S.S Nyarushanje	1022	23	1:44
Bugangari S.S	629	10	1:63
Katurika S.S	460	14	1:33
St Francis Buhunga H.S	724	7	1:103
Bwambara S.S	450	7	1:64
St Joseph Vocational S S Rushasha	673		

Nyakagyeme S.S	573	9	1:64
Kyabugashe High School	624	23	1:27
Rwabukoba S.S	234	7	1:33
Bishop Robert Voc Ss Rwamagaya	514	7	1:73
Kashenyi S.S	808	9	1:90
St Williams ss Rwengiri	353	7	1:50
Immaculate Heart SS	1850	56	1:33
Makobore High School	169	16	1:11
Kinyasano Girls High School	282	30	1:9
St Gerald's SS	971	58	1:17
Kagunga SEED School	249	13	1:19

Source: Education Department

### 5.5 Efficiency Ratios (primary)

- Pupil-teacher ratio 39:1
- Pupil- desk ratio 8:1
- Pupil-classroom ratio 80:1
- Pupil-latrine stance ratio 60:1
- Pupil-text book ratio 3:1
- Pupil-teacher ratio 39:1

### 5.7 Performance in National Examinations by year in percentages

**Table 5.11: P.L.E Result Analysis by year and percentage**

YEAR	GRADE 1		GRADE 2		GRADE 3		GRADE 4		UNGRADED	Absentees	TOTAL (Excluding Absentees)
	No.	%	No.	%	No.	%	No.	%	No		
2016	1,164	16.9	3,251	47.1	1,484	21.5	683	9.9	317	116	6,899
2017	1,051	15.0	3,710	52.9	1,450	20.7	644	9.2	161	128	7,016
2018	1,210	16.9	3,202	44.8	1,713	23.9	825	11.5	205	144	7,155
2019	1,074	14.7	3,721	50.	1,538	21.0	676	9.2	240	81	7,257

Source: Education Department

**Table 5.12: PLE Performance by gender and division 2019**

Grade/Division	Boys		Girls		Total	
	Number	Percentage	Number	Percentage	Number	Percentage
Division I	610	56.8	484	45.1	1,074	14.7
Division II	1,727	46.4	1,994	53.6	3,721	50.8
Division III	558	36.3	980	63.7	1,538	21.0
Division IV	285	42.2	391	57.8	676	9.2
Ungraded	77	32.1	163	67.9	240	3.3
X	41	50.6	40	49.4	81	1.1
<b>Total</b>	<b>3,298</b>	<b>45.0</b>	<b>4,052</b>	<b>55.3</b>	<b>7,330</b>	<b>100</b>

*Source: Education Department*

## 5.8 Inspectorate

### Indicators under Inspectorate

- Inspector: Primary School ratio: 5:178
- Number of schools Inspected in 2019/2020 financial year: 178
- Number of school inspectors 5



## **CHAPTER SIX: WORKS AND TECHNICAL SERVICES**

### **6.0 Introduction**

The Works Sector comprises of two Departments (Roads and Technical Services and that of Rural Water and Sanitation). The sector further has to ensure proper quality in design, construction, inspection and maintenance of all Local Administration building structures. The national roads are developed and maintained by the Ministry of Works and Transport. The District Local Government maintains district roads while Community access roads are the responsibility of the Lower Local Governments. This section presents selected statistics on work services delivery.

### **6.1 Roads**

The District has a total of approximately 345.81km of road network, 122.17km of Urban Road Network, 845.07km of Community Access Road network. The district is in charge of maintaining the condition of feeder roads whereas Sub-Counties maintain community roads.

#### **6.1.1 Roads by grade, Length and condition.**

There are several categories of road networks including Trunk roads managed by the Central Government, Feeder roads managed by the District and Town councils, and community roads are maintained by community members.

**Table 6.1: District Roads by Type, length and condition as of 2019/20**

S/N	Road Name	Type of road	Location sub-county/county	No of Bridge/Culvert	Road length (km)	Road condition	Accessibility
1	Kigaga -Birara	Earth	Nyakagyeme	7-lines culverts,2-bridges	<b>1.8</b>	fair	motorable
2	Kakinga -Ahamuyanja	Earth	Kebisoni	8-lines of culverts	<b>6.5</b>	Good	motorable
3	Mabanga-Kahenge	Earth	Kebisoni	6-lines of culverts	<b>5.3</b>	Good	motorable
4	Bwambara-Ntungwa	Earth	Bwambara	9-lines of culverts	<b>5.1</b>	Poor	motorable
5	Rukungiri-Rubabo-Nyarushanje	Earth	1.Buyanja 2.Nyarushanje	1-bridge 23-lines ofculverts	<b>27.3</b>	good	motorable
6	Bikongozo-Kirimbe	Earth	Nyakihenyi	12-lines ofculverts	<b>4.1</b>	fair	motorable
7	Kyomera-Ihindiroyabukumba	Earth	1.Ruhinda 2.Bwambara	6-lines of culverts	<b>10.5</b>	Poor	non-motorable
8	Rwamahwa- Kakindo	Earth	1.Nyakagyeme	20-lines ofculverts	<b>10.3</b>	poor	motorable
		Earth	2.Bugangari	1-bridge			
9	Kebisoni-Mabanga - Kihanga	Earth	1.Kebisoni 2.Buhunga	1-bridge 13-lines ofculverts	<b>17.8</b>	Good	motorable
10	Kihanga -Rwemburara	Earth	Buhunga		<b>3.6</b>	Fair	motorable
11	Kebisoni-Kabingo-Mabanga	Earth	Kebisoni	8- lines of culverts	<b>6.0</b>	Fair	motorable
12	Omukiyenje-Aharugyera	Earth	Nyarushanje	1-bridge,4-culverts	<b>2.1</b>	Fair	motorable
13	Kashenyi-Rwengiri	Earth	1.Ruhinda	6 lines of culverts	<b>10.5</b>	Fair	
		Earth	2.Bugangari				motorable
14	Kagashe-Rwakanyegyero	Earth	1.Buyanja	5- lines culverts	<b>8.1</b>	Poor	non-motorable
		Earth	2.Kebisoni				
15	St.Francis -Ikuniro	Earth	Buhunga	2-bridges,7-culverts	<b>3.5</b>	Good	motorable
16	Kagashe-Ikuniro-Buhunga	Earth	Buhunga	2-brigddges,11-culverts	<b>5.5</b>	Good	motorable
17	Buhunga -Rwemburara	Earth	Buhunga	2-bridges,7-culverts	<b>5.5</b>	Fair	motorable

18	Buyanja -Nyakagyeme	Earth	1.Buyanja	2-bridges,9culverts	<b>12.0</b>	Good	motorable
			2.Nyakagyeme				
19	Ruhinda -Rwengiri	Earth	1.Ruhinda	1-bridge,8-culverts	<b>9.5</b>	Poor	non-motorable
			2.Bugangari				
20	Kisiizi- Nyarurambi-Kamaga	Earth	1.Nyarushanje 2.Nyakishenyi	1-bridges,13-culverts,	<b>104.0</b>	Fair	motorable
21	Kirimbe- Katonya-Kagana-Nyakisoroza	Earth	Nyakishenyi	2-bridges, 13culverts	<b>12.2</b>	Fair	motorable
22	Kazindiro- Kyaburere	Earth	Bugangari	7culverts	<b>10.9</b>	Fair	
23	Ikuniro-Rutooma	Earth	Buhunga	2-bridges,4-culverts	<b>2.9</b>	Good	motorable
24	Kashenyi -Rusheshe	Earth	1.Ruhinda	1-bridge,6-culverts	<b>4.9</b>	Fair	
			2.Buhunga				motorable
25	Bikurungu- Kakoni	Earth	Bwambara	1-bridge, 7-culverts	<b>6.3</b>	Fair	motorable
26	Nyabikuku -Rwakigaju	Earth	1.Nyakagyeme	3-bridges,8-culverts	<b>9.6</b>	Good	motorable
			2.Bugangari				
27	Mukinyinya-Mukishanda	Earth	1.Nyakishenyi	1-bridge	<b>7.8</b>	Good	motorable
			2.Nyarushanje				
28	Nyakishenyi-Marashaniri- Kyabamba	Earth	1.Nyakishenyi	5-bridges,11-culverts	<b>11.1</b>	Poor	motorable
			2.Nyarushanje				
29	Bugangari-Nyabitete	Earth	Bugangari	2-bridges,3culverts	<b>9.3</b>	fair	motorable
30	Omukikunika -Rusheshe	Earth	Buhunga		<b>4.2</b>	good	motorable
	Rwakanyegyero-Kihanga	Earth	1.Kebisoni	2-bridges	<b>2.3</b>	poor	motorable
			2.Buhunga				
31	Joshwa Stage - Rweshama P/S	Earth	Ruhinda	2-culverts	<b>6.5</b>	fair	motorable
32	Kabaranga-Murago-Nyakisoroza	Earth	Nyakishenyi	6 Culverts	<b>11.7</b>	Poor	non-motorable

33	Rwenshaka-Burombe-Bwanda	Earth	Ruhinda Buhunga	4 Culverts	<b>8.0</b>	fair	motorable
34	Kikarara-Garuka-Kyabahanga	Earth	Bwambara	5 Culverts	<b>12.6</b>	Poor	non-motorable
35	Omukishanda-Ndago	Earth	Nyarushanje	4 Culverts	<b>4.8</b>	fair	motorable
36	Rushararazi-Ihimbo	Earth	Bwambara	1 Culvert	<b>1.8</b>	fair	Non-Motorable
37	Mushunga-Kabuga	Gravel	Nyarushanje	8-lines of Culverts	<b>3.5</b>	fair	Non Motorable
38	Nyabushenyi-Kiganga-Minera	Gravel	Nyarushanje	12-lines of culvert 1-bridge	<b>5.6</b>	fair	Motorable
39	Rwamuhima-Kihunga-Minera	Gravel	Buyanja	18lines of culverts 1-bridge	<b>16.0</b>	good	Motorable
	<b>Total</b>				<b>345.8</b>		

Source: Works and Technical services

**Table 6.2: District: Rukungiri; Trunk Roads**

Type of road	Location Sub-county/County	Name of the road	No of Bridge/culvert	Road length(Km)	Grade I,II,III	Condition Good,bad,etc	Accessibility Motorable non-motorable
Trunk	Western division	Rukungiri-Mitano	3 bridges	27	III	poor	Motorable
	Nyakagyeme		23 culverts				
Trunk	Municipality	Kagogo-Rusheshe	2 bridges	13.2	III	bad	Motorable
	Buhunga		17 culverts				
Termac	eastern division	Rukungiri-Kahengye	4 bridges	20.3	I	good	Motorable
	Buyanja		34 culverts				
	Kebisoni						
Trunk	Kebisoni	Kebisoni-KISIIZI	5 bridges	34	III	poor	Motorable
	Nyarushanje		12 culverts				
Trunk	Nyakagyeme	Katobo-Rwenshama	6 bridges	56	I	good	Motorable

	Bugangari		97 culverts				
Trunk	Nyakagyeme Bugangari	Rwerere-Bugangari	3 bridges 53 culverts	12	I	good	Motorable
Trunk	Bwambara	Burama-Ntungwa	2 bridges	12	I	good	Motorable
			23 culverts				
Trunk	Western& easten (Divisions) Ruhinda	Rukungiru-Ruhinda	1 bridge	16	II	bad	Motorable Motorable
			21 culverts				
Trunk	Nyarushanje	Kisiizi-Bikongozo-Kamaga- Kabaranga	4 bridges	32	I	good	Motorable
	Nyakishenyi		22 culverts				
Trunk	Nyarushanje	Nyarushanje-Ikona	7 culverts	6	III	bad	Motorable
<b>TOTAL DISTANCE</b>				<b>228.5</b>			

Source: Works and Technical services

**Table 6.3: Number of Kms of roads Maintained by sub county**

<b>Sub-county/Town council</b>	<b>kms of roads Maintained</b>
Buyanja Subcounty	111.4
Buyanja Town Council	24
Kebisoni Subcounty	96.9
Kebisoni Town Council	56
Nyakishenyi Subcounty	83.7
Nyarushanje Subcounty	117.4
Bugangari Subcounty	93.5
Buhunga Subcounty	50.7
Bwambara Subcounty	95.2
Bikurungu Town council	28
Nyakagyeme Subcounty	124.9
Rwerere Town Council	22
Ruhinda Subcounty	74.8
<b>Total</b>	<b>978.5</b>

*Source: Works and Technical services*

**Table 6.4: Selected development indicators**

<b>Indicator</b>	<b>Value 2019/20</b>
Total District road network (Km)	345.81
Total Urban Road Network (Km)	122.17
Total Community Access Road network (Km)	845.07
District Paved Road (Km)	NIL
District un-Paved Road in good condition (Km)	103.5
District un-Paved Road in fair condition (Km)	219.1
District un-Paved Road in poor condition (Km)	23.21
Urban paved road (km)	NIL
Urban paved road in good condition (Km)	NIL
Urban paved road in fair condition (Km)	NIL
Urban paved road in poor condition (Km)	NIL
Community Access road in good condition (Km)	66.83
Community Access road in fair condition (Km)	300

Community Access road in poor condition (Km)	478.24
No of kms of community access roads maintained	
No. of Kms of community access roads rehabilitated	
Length in KM of urban unpaved roads routinely maintained	20
Length in KM of urban unpaved roads periodically maintained	0
Number of kms of urban roads rehabilitated	
Number of Kms of urban roads with Street lights installed	
Number of Kms of urban roads with side pavements constructed	0
No of bridges maintained	0
No of culvert crossing maintained	40
Length in KM of rural roads rehabilitated	0
Length in KM of district roads periodically maintained	NIL
No of public building constructed	20

*Source: Works and Technical services*

### 6.1.2 Planned roads by name and status

**Table 6.5: Roads by type by maintaining authority**

Road Name	Type	Distance in Km	Maintaining Authority	Last Period of maintenance
1 Nyakishenyi-Marashaniro-Kyabamba	Earth	11.1	Rukungiri DLG	2017/18
2 Rwamuhima-Kihunga-Minera	Gravel	4.0	Rukungiri DLG	2015/16
3 Buyanja-Nyakagyeme	Earth	10.2	Rukungiri DLG	2017/18
4 Rwenshaka-Burombe-Bwanda	Earth	3.5	Rukungiri DLG	2017/18
5 Kirimbe-Kagana-Nyakisoroza	Earth	12.2	Rukungiri DLG	2017/18
6 Kashenyi-Rwengiri	Earth	10.5	Rukungiri DLG	2017/18
7 Joshua stage-Rwenshama Ps-Nyondo-Katokye	Earth	6.5	Rukungiri DLG	2016/17
8 Omukishanda - Ndago	Earth	5.6	Rukungiri DLG	2017/18
9 St. Francis-Ikuniro	Earth	3.5	Rukungiri DLG	2018/19
10 Ruhinda - Rwengiri	Earth	9.5	Rukungiri DLG	2018/19
11 Mushunga-Kabuga	Gravel	3.5	Rukungiri DLG	2015/16

*Source: Works and Technical services*

## 6.2 Housing

The housing in this category basically includes buildings/rooms being used for Office accommodation for the various departments within the district.

**Table 6.6: Capacity and Condition of District Office Blocks**

Dept/Sector	No. Of offices	Ownership (district/rented)	Location (district Hdqrts/off)	Adequacy (yes/no)	Condition (good/fair/bad)
Finance	06	District	Hdqrts	yes	good
Council	04	District	Hdqrts	no	bad
Medical	11	District	Hdqrts	yes	good
Production	10	District	Hdqrts	yes	good
Police	11	District	Hdqrts	no	bad
Education	07	District	Hdqrts	yes	good
Works	07	District	Hdqrts	yes	fair
Audit/DSC/Fisheries	06	District	Hdqrts	yes	good
Water	04	District	Hdqrts	yes	good
Labour	02	District	Hdqrts	yes	good
Administration	06	District	Hdqrts	yes	good
Land office	03	District	Hdqrts	no	fair
Environment	01	District	Hdqrts	yes	good

Source: Source: Works and Technical services

## 6.3 Point water sources

**Table 6.7: Point water sources by sub county**

Sub-County	Protected Springs			Deep Bore Holes			Shallow Wells			Rain Water Tanks		
	Functnal	Non-Functnal	Total	Functnal	Non-Functnal	Total	Functnal	Non-Functnal	Total	Functnal	Non-Functnal	Total
Buyanja	103	13	116	35	18	53	8	3	11	13	5	18
Kebisoni	90	23	113	11	5	16	9	4	13	18	8	26
Nyakishenyi	121	14	135	1	0	1	4	2	6	7	4	11
Nyarushanje	75	12	87	5	15	20	5	6	11	24	10	34
Bugangari	106	20	126	4	2	6	10	5	15	22	16	38
Buhunga	133	9	142	2	1	3	3	2	5	9	9	18
Bwambara	54	21	75	0	0	0	7	4	11	55	18	73
Nyakagyeme	153	21	174	4	2	6	9	4	13	28	8	36
Ruhinda	133	35	168	0	1	1	5	3	8	30	11	41

Source: Water Department



**Table 6.8: Safe water sources**

Type of safe water source	Number of Households
Protected springs	29040
Shallow wells	900
Deep boreholes	2170
Yard Taps for public use	600
Kiosks	1575
Public stand posts	5000
Rain water harvest tanks	4120
Valley tanks	0
<b>Total</b>	<b>42595</b>

*Source: Water Department*

## CHAPTER SEVEN: NATURAL RESOURCES

### 7.0 Introduction

The Department of Natural Resources comprises of the Natural Resources Office, the Lands and Physical Planning Office as well as the Forestry, Environment & Wetlands Office. It is charged with the responsibility of ensuring sustainable and productive utilisation of natural resources for poverty reduction, enhanced economic growth and improved livelihoods. The major causes of the deterioration the quality and the quantity of the natural resource base is associated with human activity. There is massive deforestation particularly on privately owned land where most of the districts tree resources are. This is closely followed by wetland degradation as a result of cultivation of crops. Other threats are soil erosion whose magnitude and impact has never been quantified.

### 7.1 Environmental Sanitation

Indicator	Value 2019/20
Number of solid waste collection points	3

#### Waste Management

**Table 7.1: Waste management (particularly for urban) as of 2019/20**

Waste management type	Number
Garbage trucks	1
Refuse skips	50
Dumping sites	2

*Source: District Natural Resources Office*

#### Tree planting

- Number of nursery beds established and maintained: 05
- Number of trees planted (in calendar year 2020): 500,000 tree seedlings planted on both Gov't and government land.
- Number of commercial tree growers: 30 registered

#### Charcoal burning

- Number of licensed charcoal dealers: 05
- Number of licensed timber dealers: 10

## 7.2 Forestry

### 7.2.1. Natural and Planted Forests

There are two Natural forests in Rukungiri District; Ihimbo Central Forest Reserve standing on 566ha of land and South Imaramagambo Central Forest Reserve standing on 15,175 ha.

### 7.4.2. Types of Forests

**Table 7.2: Type of forests by Acreage**

Type of Forest	Size (ha)
Central Forest Reserves	15,988
District/Local Forest reserves	12
Private forest	60,000

*Source: District Natural Resources Office*

**Table 7.3: Local Forest Reserves**

Name of Forest	Location	Area(ha)	Condition	Date when gazetted
Kebisoni Local Forest Reserve	Kebisoni	7	Eucalyptus plantation	1968
Kagogo Local Forest Reserve	Western Division	5	Eucalyptus plantation	1968

*Source: Forest Department*

**Table 7.4: Gazetted Forest Reserves**

Name of forest	Size(ha)	Date gazette
South Imaramagambo Central Forest Reserve	15,175	
Ihimbo Central Forest Reserve	566	
Rwengiri Central Forest Reserve	155	
Rushaya	31	
Bwambara	32	
Rukungiri Central Forest Reserve	26	
Kebisoni	7	1968
Kagogo	5	1968
Rubabo	16	

*Source: District State of Environment Report*

**Table 7.5: Distribution of Forest Reserves by category**

Category of forest reserve	Area (ha)
Central Forest Reserves	15,988
Local Forest Reserves	12

*Source: Forest Department*

#### **7.4.3 Private Forests in the District**

More tree cover is on private land and the common species planted are eucalyptus and pines.

#### **7.5 Conclusion**

Tree planting in Rukungiri District is increasing gradually year after year due to increasing demand for wood products. The population increase has forced tree farmers to plant eucalyptus near water sources especially in wetlands. Other tree species have been introduced to farmers in order to reduce monopoly on eucalyptus.

## CHAPTER EIGHT: GENDER & COMMUNITY BASED SERVICES

### 8.0 Introduction

This chapter shows statistics on marginalized groups or communities. The mandate of the department is to promote social protection and promotion of human right as well as empowering these groups.

### 8.1 General Community Development Issues

The Community Based services sector is one of the major sectors in the district and is composed of;

- Probation Youth, Children and Social welfare
- Gender, Culture and Community Development
- Disability and Elderly
- Labour and Industrial Relations

The District District has several community development groups. These include youth groups, women groups, civil society organisations, FAL study groups and cultural groups.

**Table 8.1: Community Development Groups in the District**

Groups	Number
Number of Community Development Groups	7000
Number of women Groups:	74
Community Development Centres:	6
Number of NGOs:	30
No of NGOs support programs for disadvantaged groups.	27
Number of CBOs	29,355
Ratio of CDAs/CDOs to the community:	23:80,000
Youth Groups:	142
PWD groups:	8

### 8.2 Probation, OVCs and Child Protection Issues (Orphan hood status)

In Uganda, an Orphan is defined as a child less than 18 years who has lost one or both parents. Parent's survival has astrong bearing on welfare of the children because children are dependant on their parent and other adult to support them.

**Table 8.2: Number of Orphans by Age group and Type by subcounty**

Group Category	Age Category	
	0-8years	0-17 yeras
Had lost one parent	4,095	14,694
Had lost both parents	403	2,292
Had atleast Lost a parent (No of Orphans)	4,498	16,986

*Source: Census 2014*

### 8.3 Situation of OVC

- Total number of OVCs: 39,036
- Orphans constitute of 43.5%(16986/39036) percent of OVCs
- Children out of school: 6,582
- Number of orphanage homes by location: 2 (Bucence Chidren Centre in Nyakagyeme subcounty & Bridge of Hope Children Centre in Kebisoni TC)
- Number of child resettlement centres: 0

## CHAPTER NINE: PRODUCTION AND MARKETING

### 9.0 Introduction

The production sector is comprised of five sectors namely: Agriculture, Veterinary Services, Fisheries, Entomology as well as Trade and Industry. The department also ensures that appropriate institutional linkages are maintained with all relevant sector agencies; comprising mostly crop, livestock, fisheries, forestry and industrial research, marketing organizations, NGOs and CBOs engaged in agricultural activities

### 9.1 Agriculture

The term agriculture is used in a very broad sense to cover all the agricultural activities namely; crops, livestock, poultry, and fish farming.

Agriculture is the most common economic activity in the district. The majority of farmers are small holders who grow both perennial and annual crops. The perennial crops include Banana, Coffee, and Tea, while the annuals include maize, sweet potatoes, beans, cassava and groundnuts. Table 9.1 shows the major crops grown in the District as of 2020.

- Number of Households involved in Agriculture: 79,853/80,863 (98.8%)
- Ratio of Agriculture Extension workers to farmers: 1:1948 (41/79,853)

#### 9.1.1 Crop production

Both perennial and annual crops are grown in the district. The annual crops are mostly grown for home consumption.

**Table 9.1: Estimated number of households engaged in selected crop Production,2019/20**

Crop	Number of households	Percentage of total households
Maize	79,000	97.7
Beans	78,300	96.8
Bananas	67,300	83.2
Coffee	63,882	79.0
I/Potatoes	16,900	20.9
Sorghum	14,000	17.3
Rice	8,634	10.7
G/nuts	7,810	9.7
F/Millet	7,668	9.5
S/Potatoes	6,909	8.5
Cassava	4,960	6.1

Cabbages	4,260	5.3
Tomatoes	3,500	4.3
Soybeans	3,410	4.2
Pineapples	2,030	2.5
P/Fruits	1250	1.5
Onions	927	1.1
Tea	253	0.3
Tobacco	50	0.1
Sugarcane	50	0.1
Simsim	20	0.0
Vanilla	6	0.0
Cotton	0	0.0

*Source: District Agricultural Officer*

**Table 9.2: Common Diseases and Pests for selected crops**

<b>Crop</b>	<b>Disease</b>	<b>Pest</b>
Maize	NONE	Army worm
Cassava	Cassava brown streak	NONE
Beans	NONE	Aphids
Passion Fruits	Woodress disease	NONE
Coffee	Coffee red blister	Coffee twig borer
Bananas	Banana Bacterial Wilt	Banana weevil

*Source: District Agricultural Officer*

**Table 9.3: Technical Staff by Category by gender**

<b>Category of Staff</b>	<b>Male</b>	<b>Female</b>	<b>Total</b>
Number of Agriculture Officers	9	3	12
Ass. Agriculture Officers	8	5	13
Agricultural Mechanics	0	0	0

*Source: District Agricultural Officer*



### 9.1.2 Livestock and Veterinary Services

**Table 9.4 Staffing in veterinary department by sex**

<b>Established Posts</b>	<b>Number In Post</b>	<b>Number Female</b>	<b>Number Male</b>
Senior Veterinary Officer (Dvo)	01	00	01
Veterinary Officer	00	00	00
Livestock Improvement Officer	00	00	00
Assistant Veterinary Animal Husbandry Officer	14	00	14
Hides Improvement Officer	00	02	00
Veterinary Assistant	00	00	00

*Source: District Veterinary Office*

#### 9.1.2.1 Major livestock

Livestock is defined as all animals and birds kept or reared specifically for agricultural purposes including cattle, sheep, goats, pigs, horses, poultry, rabbits and donkeys. Table 9.1 shows the major livestock in the district that include; cattle, goats, sheep, pigs, chicken, ducks and turkeys.

**Table 9.5 Livestock in the District**

<b>SN</b>	<b>Type of Livestock</b>	<b>Estimated Numbers</b>
1	Goats (All Breeds)	73,406
2	Chicken, Ducks & turkeys	68,118
3	Cattle (Local Breeds low Grade Crosses)	29,093
4	Cattle (Exotic and High Grade crosses)	28,799
5	Pigs	12,332
6	Sheep	9,255
7	Dogs	6,274
8	Rabbits	2,012
9	Donkeys	10

*Source: District Veterinary Office*

Rukungiri district has no animal clinic established and operational at standards. However, it has a total of 15 animal drug shops located in different subcounties as shown in table 9.6 below. We also note that only 6/16 subcounties/divisions/town councils have atleast a functional drugshop. Similarly, there is no functional livestock water facilities management committees, no livestock water facilities constructed and no water user committees trained.

**Table 9.6 Number of Animal drug shops established and operational at standards**

<b>Sub-county</b>	<b>#Animal drugshops</b>
Eastern Division	5
Buyanya Town Council	3
Kebisoni Town Council	3
Nyarushanje	2
Southern Division	1
Western Division	1
<b>Total</b>	<b>15</b>

*Source: District Veterinary Office*

### 9.1.2.2 Major Livestock Diseases

The disease with the highest prevalence in Rukungiri District is New Castle disease (92%) followed by Tick borne infections (85%)

**Table 9.7 Livestock Diseases**

<b>S/N</b>	<b>Diseases</b>	<b>Prevalence (%)</b>
1	New Castle Disease	92
2	Tick Borne Infections	85
3	Intestinal worms	75
4	Lumpy Skin Disease	25
5	Eye Infections	20
6	Foot Rot	17
7	Gynecological Infections	12
8	Brucellosis	10
9	CBPP	0
10	FMD	0
11	Anthrax	0

*Source: District Veterinary Office*

## 9.2 Fisheries

Fish farming is an activity in which farmers construct fishponds usually on their holding and introduce fish fries (young fish). Fish fries are commonly obtained from fish breeders like the Fisheries Research Institute (FRI) of the National Research Organization (NARO). This section presents statistics on the numbers of fish catch, values of the fish catch, numbers of landing sites, numbers of fish ponds and the numbers of boat engines in the landing sites.

**Table 9.8 Number of fish farmers by sub county**

Sub-county	No. of fish farmers	No. of fish ponds		
		Stocked	Un stocked	Total
Buyanja	04	05	03	08
Buyanya Town Council	04	05	04	09
Kebisoni	02	07	00	07
Kebisoni Town Council	03	01	02	03
Nyakishenyi	03	04	00	04
Nyarushanje	07	07	05	12
Bugangari	03	00	05	05
Buhunga	01	08	02	10
Bwambara	06	05	04	09
Bikurungu Town council	00	00	00	00
Nyakagyeme	05	04	09	13
Rwerere Town Council	00	00	00	00
Ruhinda	06	04	10	14
Eastern Division	02	01	03	04
Southern Division	05	02	11	13
Western Division	05	06	05	11

*Source: Fisheries Section*

**Table 9.9: Stocked fish ponds by type by Sub-county. Mirror carp.**

Sub-county	Tilapia Ponds	Miller Cap Ponds	Claris Ponds	Mixed Ponds
Buyanja	04	0	0	01
Buyanya Town Council	04	0	0	0
Kebisoni	06	0	0	01
Kebisoni Town Council	01	0	0	01
Nyakishenyi	04	0	0	0
Nyarushanje	07	0	0	0
Bugangari	0	0	0	0
Buhunga	07	01	0	0

Bwambara	04	01	0	0
Bikurungu Town council	0	0	0	0
Nyakagyeme	03	0	0	01
Rwerere Town Council	0	0	0	0
Ruhinda	04	0	0	0
Eastern Division	01	0	0	0
Southern Division	02	0	0	0
Western Division	02	0	0	03

*Source: Fisheries Section*

**Table 9.10: Number of landing sites by annual fish catch and value by sub-county for 2014**

S/County	No Landing sites	No licensed boats	of No. boat engines	Annual catch (kg)	Fish Value (shs)
Bwambara SC	01	60	60	1,400.896	8.7billion
<b>Total</b>	<b>01</b>	<b>60</b>	<b>60</b>	<b>1,400,896</b>	<b>8.7billion</b>

*Source: Fisheries Section*

### 9.3 Productive Entomology

**Table 9.11 Number of bee farmers in the district by type, number of beehives and production**

S/County	No of Bee keepers	No of Groups	Type and no. of hives				Production(Kg) p.a.		
			Langstroth	KTB	Local	Box	Honey	Wax	Propolis
Buyanja	30	3		30	496		2630	10	N/R
Buyanya Town Council	20	2	2	25	300		1625	7	N/R
Kebisoni	25	2	10	40	512		2760	09	N/R
Kebisoni Town Council	40	3	0	35	600		3175	7	N/R
Nyakishenyi	160	8	60	230	2248		12,990	10	15
Nyarushanje	120	4	0	150	500		2670	5	N/R
Bugangari	80	5	0	70	458		2640	6	N/R
Buhunga	130	6	10	100	646		3730	10	10
Bwambara	50	10	0	310	300		1830	0	N/R
Bikurungu Town council	20	3	0	0	200		900	0	N/R
Nyakagyeme	80	0	10	200	2400		12,800	20	5
Rwerere Town Council	25	2	0	0	559		2795	10	N/R
Ruhinda	30	2	132	729	500		1087	25	N/R
Eastern Division	19	0	0	6	200		1030	20	N/R
Southern Division	30	1	0	19	687		2970	5	N/R
Western Division	25	0	0	5	500		2500	5	N/R
Total	884	51	224	1949	11,106		55,372	149	30

Source: Entomology Section

#### 9.4 Extension Services

Number of extension workers, ratio of extension workers to farming households, average extension visits to a farmer / farmer group per month by sub county

**Table 9.12: Ratio of extension workers to farming Households**

<b>Sub-county</b>	<b># extension workers</b>	<b>Farming HH</b>	<b>Ratio of extension workers to farming HH</b>	<b>average extension visits to a farmer per month</b>
Buyanja	3	6,626	1:2,209	3
Buyanya TC	3	1,145	1:382	5
Kebisoni	3	4,789	1:1,596	3
Kebisoni TC	3	847	1:282	8
Nyakishenyi	3	7,482	1:2,494	2
Nyarushanje	3	9,702	1:3,234	2
Bugangari	3	6,670	1:2,223	2
Buhunga	3	4,969	1:1,656	2
Bwambara	4	5,332	1:1,333	2
Bikurungu TC	3	1,017	1:339	4
Nyakagyeme	2	6,241	1:3,121	4
Rwerere TC	3	953	1:318	10
Ruhinda	2	5,644	1:2,822	4
Eastern Division	1	1,703	1:1,703	2
Southern Division	1	1,103	1:1,103	2
Western Division	1	1,312	1:1,312	2

*Source: District Agricultural Officer*

#### 9.5 Trade and Industry

**Table 9.13: Number of registered cooperative organizations by Sub County**

<b>Sub-county</b>	<b># registered co-operative organizations</b>
Buyanja	3
Buyanya Town Council	3
Kebisoni	0
Kebisoni Town Council	7
Nyakishenyi	2
Nyarushanje	3
Bugangari	2
Buhunga	3

Bwambara	1
Bikurungu Town council	1
Nyakagyeme	7
Rwerere Town Council	1
Ruhinda	3
Eastern Division	4
Southern Division	5
Western Division	4
<b>Total</b>	<b>51</b>

*Source: District Commercial Officer*

**Table 9.14: Number of markets by type by Sub County**

Sub-county	Type of markets	Number of markets
Buyanja	Matooke	1
Buyanya Town Council	Matooke and general market	2
Kebisoni	General Market	1
Kebisoni Town Council	Roadside and General market	2
Nyakishenyi	General market	2
Nyarushanje	General market	1
Bugangari	General market	3
Buhunga	Genral market	2
Bwambara	Food market and weekly markets	3
Bikurungu Town council	Roadside market and weekly market	2
Nyakagyeme	Weekly markets	2
Rwerere Town Council	Matoke market and general market	2
Ruhinda	Genral market	2
Eastern Division		0
Southern Division	Genral market	1
Western Division	Central market	1
<b>Total</b>		<b>27</b>

*Source: District Commercial Officer*

**Table 9.15 Slaughter slabs/houses by location**

<b>Location</b>	<b>Number of Slaughter Slabs</b>
Bikurungu TC	1
Rukungiri Municipality	3
Ruhinda SC	2
Rwerere TC	1
Buyanja TC	1
Kebisoni S/C	1
Nyakagyeme SC	1
Nyakishenyi SC	1
Buhunga SC	1

*Source: Marketing dept*

**Milk Processing Plants**

- Rukungiri Dairy Cooperative Union
- Buyanja Dairy
- Morethan 20 cooling points



## ANNEX 1: DISTRICT STATISTIAL COMMITTEE

NO	Name	Designation	Department	Telephone Number	E-mail Address
1.	Byamungu Elias	Chief Administrative Officer	CAO'S Office (Chairperson)	0782777422	<a href="mailto:ebyamungu1964@yahoo.com">ebyamungu1964@yahoo.com</a>
2.	Turyazayo Isaac	Statistician Officer	Planning (Secretary)	0779109517	<a href="mailto:gumisirizaamos2@gmail.com">gumisirizaamos2@gmail.com</a>
3.	Kwizera Godie	District Planner	Planning Department	0777398066	<a href="mailto:godiekr2001@yahoo.com">godiekr2001@yahoo.com</a>
4.	Oneck Pius Kwesiga	Senior Agriculture Officer	Production	0782385669	<a href="mailto:oneckpius@gmail.com">oneckpius@gmail.com</a>
5.	Muhumuza Donald	Information and Technology	Statutory Bodies	0773062989	<a href="mailto:Vandon79@gmail.com">Vandon79@gmail.com</a>
6.	Akansinguza Isaac	Senior Accounts Assistant	Finance	0771602160	<a href="mailto:isaacrugyeyo@gmail.com">isaacrugyeyo@gmail.com</a>
7.	Kevin Akampurira	Accounts Assistant	Education	0757422454	<a href="mailto:Kevinakc9@gmail.com">Kevinakc9@gmail.com</a>
8.	Karuhanga Nicholas	Engineering Officer	Works	0774152381	<a href="mailto:nicholasrugonde@yahoo.com">nicholasrugonde@yahoo.com</a>
9.	Agaba Martin	Senior Land Management Officer	Natural Resources	0785481904	<a href="mailto:agabamt@gmail.com">agabamt@gmail.com</a>
10	Agaba Nemesius	Senior Community Development Officer	Water	0782135902	<a href="mailto:twesigomwej@gmail.com">twesigomwej@gmail.com</a>
11	Arinaitwe Florence	Principal Internal Auditor	Audit	0772909274	<a href="mailto:mulenflo@gmail.com">mulenflo@gmail.com</a>
12	Mukuru Harison	Probation and Welfare Officer	Community	0783384498	<a href="mailto:hmukuru@gmail.com">hmukuru@gmail.com</a>
13	Nuwemuhwezi Judith	Biostatistician	Health	0701789752	<a href="mailto:jmuhwezi@gmail.com">jmuhwezi@gmail.com</a>
14	Atuhairé Caroline	Commercial Officer	Trade And Industry	0782019219	<a href="mailto:Atucarol2008@gmail.com">Atucarol2008@gmail.com</a>
15	Tumwebaze Ivan	Senior Human Resource Officer	Management	0782594345	<a href="mailto:tumwebazeivan@yahoo.com">tumwebazeivan@yahoo.com</a>

## ANNEX 2: LIST OF GOVERNMENT PRIMARY SCHOOL

S/N	SCHOOL	SUB-COUNTY	PARISH
1	Bugangari	Bugangari SC	Bugangari
2	Rwemiringa	Bugangari SC	Nyabiteete
3	Katerampungu	Bugangari SC	Kyabureere
4	Nyanganjara	Bugangari SC	Kazindiro
5	Rwengiri	Bugangari SC	Buarama
6	Kyabureere	Bugangari SC	Kyabureere
7	Kazindiro	Bugangari SC	Kazindiro
8	Kakindo	Bugangari SC	Kakindo
9	Nyakariro	Bugangari SC	Kashayo
10	Kanyankyende	Bugangari SC	Nyabiteete
11	Nyakitabata	Bugangari SC	Bugangari
12	Rwanyanja	Bugangari SC	Kazindiro
13	Burembo	Bugangari SC	Nyabiteete
1	Kyaruyenje	Buhunga SC	Kabingo
2	Rutooma-Kihanga	Buhunga SC	Kibirizi
3	Buhunga	Buhunga SC	Buhunga
4	Rutooma Int.	Buhunga SC	Kyaruyenje
5	Kakamba	Buhunga SC	Kyaruyenje
6	Keihumure	Buhunga SC	Bwanda
7	Kibirizi	Buhunga SC	Kibirizi
8	Ikuniro	Buhunga SC	Kabingo
9	Kanyondo	Buhunga SC	Bwanda
10	Katurika	Buhunga SC	Buhunga
11	Omurusheshe	Buhunga SC	Bwanda
12	Kagorogoro	Buhunga SC	Kibirizi
13	Kihanga	Buhunga SC	Kihanga
14	Karuzigye	Buhunga SC	Buhunga
1	Mashongora	Nyakagyeme SC	Rushasha
2	Kabura	Nyakagyeme SC	Kabwoma
3	Kyamurari	Nyakagyeme SC	Kigaaga
4	Rugando	Nyakagyeme SC	Nyakinengo
5	Nyaburondo	Nyakagyeme SC	Kitimba
6	Rushasha	Nyakagyeme SC	Rushasha
7	Nyamifura	Nyakagyeme SC	Kabwoma
8	Nyakinengo	Nyakagyeme SC	Nyakinengo
9	Nyakagyeme	Nyakagyeme SC	Kahoko
10	Masya	Nyakagyeme SC	Masya

S/N	SCHOOL	SUB-COUNTY	PARISH
12	Kasoroza	Nyakagyeme SC	Kitimba
13	Kahoko	Nyakagyeme SC	Kahoko
14	Munyeganyegye	Nyakagyeme SC	Masya
15	Rwerere	Nyakagyeme SC	Rwerere
16	Mitooma	Nyakagyeme SC	Kahoko
17	Kirehe	Nyakagyeme SC	Nyakinengo
18	Katooma	Nyakagyeme SC	Nyakinengo
19	Ruteete	Nyakagyeme SC	Kabwoma
20	Kyabugashe	Nyakagyeme SC	Rusheshe
21	Kabwoma	Nyakagyeme SC	Rwerere
22	Bucence	Nyakagyeme SC	Kigaaga
1	Kakoni	Bwambara SC	Nyabubale
2	Rushararazi	Bwambara SC	Kikongi
3	Kirama	Bwambara SC	Nyabubale
4	Bwambara	Bwambara SC	Bwambara
5	Rweshama Public	Bwambara SC	Rweshama
6	Ihimbo	Bwambara SC	Kikongi
7	Omuburama	Bwambara SC	Bikurungu
8	Karyamacumu	Bwambara SC	Kikongi
9	Kikarara	Bwambara SC	Kikarara
10	Bufunda	Bwambara SC	Bwambara
11	Bikurungu cent.	Bwambara SC	Bikurungu
12	Nyamihuku	Bwambara SC	Nyabubare
1	Rwera	Ruhinda SC	Nyarwimuka
2	Kafuka	Ruhinda SC	Nyarwimuka
3	Ndere	Ruhinda SC	Ndere
4	Kajwamushana	Ruhinda SC	Kicwamba
5	Burombe	Ruhinda SC	Burombe
6	Kigarigari	Ruhinda SC	Nyakitabire
7	Rwamagaya	Ruhinda SC	Burombe
8	Nyamambo	Ruhinda SC	Rwamugoma
9	Rwabukoba	Ruhinda SC	Kicwamba
10	Kyabagyerwa	Ruhinda SC	Ndere
11	Rweshama	Ruhinda SC	Rweshama
12	Kicwamba	Ruhinda SC	Kicwamba
13	Kashenyi	Ruhinda SC	Rwamugoma
14	Katookye	Ruhinda SC	Burombe
15	Kajunju	Ruhinda SC	Ndere
16	Nyakanyinya	Ruhinda SC	Rwamugoma

S/N	SCHOOL	SUB-COUNTY	PARISH
17	Rwoya	Ruhinda SC	Ndere
1	Kebisoni Int.	Kebisoni SC	Town Parish
2	Rwabigangura	Kebisoni SC	Kabingo
3	Ndama	Kebisoni SC	Kigiiri
4	Bikungu	Kebisoni SC	Nyeibingo
5	Rumbugu	Kebisoni SC	Town Parish
6	Kiigiiri	Kebisoni SC	Kigiiri
7	Karuhembe	Kebisoni SC	Karuhembe
8	Kiborogota	Kebisoni SC	Town Parish
9	Karire	Kebisoni SC	Kabingo
10	Kyamutareiga	Kebisoni SC	Nyeibingo
11	Kabingo	Kebisoni SC	Kabingo
12	Kakibaya	Kebisoni SC	Kakinga
13	Kahengye	Kebisoni SC	Kabingo
14	Garubunda	Kebisoni SC	Garubunda
15	Rugyendwa	Kebisoni SC	Mabanga
16	Rwakanyegyero	Kebisoni SC	Garubunda
17	Rwabihurwa	Kebisoni SC	Nyeibingo
18	Mabanga	Kebisoni SC	Mabanga
1	Katungu	Buyanja SC	Nyakabungo
2	Kagati	Buyanja SC	Nyakaina
3	Kanombe	Buyanja SC	Nyabiteete
4	Kasheshe	Buyanja SC	Kasheshe
5	Bishops Kasheshe	Buyanja SC	Kasheshe
6	Rugarama	Buyanja SC	Bugyera
7	Nyabiteete	Buyanja SC	Nyabiteete
8	Bugyera-Kitojo	Buyanja SC	Bugyera
9	Nyakiju	Buyanja SC	Bugyera
10	Kafunjo	Buyanja SC	Kafunjo
11	Katojo	Buyanja SC	Buyanja
12	Rwengkureijo	Buyanja SC	Nyakaina
13	Nyakaina	Buyanja SC	Buyanja T.B
14	Kyamakanda	Buyanja SC	Buyanja T.Cell
15	Kihumuro	Buyanja SC	Kyamakanda
16	Rwamuhima	Buyanja SC	Kyamakanda
17	Rwentuha	Buyanja SC	Rwakirungura
18	Rwenyangi	Buyanja SC	Rubanga
19	Rubanga	Buyanja SC	Rubanga
20	Kishonga	Buyanja SC	Rubanga

S/N	SCHOOL	SUB-COUNTY	PARISH
21	Ibumba	Buyanja SC	Rubanga
1	Bwanga	Nyarushanje SC	Bwanga
2	Kihungye	Nyarushanje SC	Bweanga
3	Kigina	Nyarushanje SC	Bwanga
4	Nyamakukuru	Nyarushanje SC	Burora
5	Nyakatunga	Nyarushanje SC	Burora
6	Kaamira	Nyarushanje SC	Ibanda
7	Karukaata	Nyarushanje SC	Ihunga
8	Mugyera	Nyarushanje SC	Bunono
9	Karama	Nyarushanje SC	Ihunga
10	Kibizi	Nyarushanje SC	Ihunga
11	Kyaruhatora	Nyarushanje SC	Burora
12	Nyarushanje U	Nyarushanje SC	Ibanda
13	Kisizi	Nyarushanje SC	Kisiizi
14	Kayanga	Nyarushanje SC	Kisiizi
15	Katobotobo	Nyarushanje SC	Ruyonza
16	Ndago	Nyarushanje SC	Ndago
17	Katunga	Nyarushanje SC	Ruyonza
18	Musyana	Nyarushanje SC	Ruyonza
19	Nyabushenyi U	Nyarushanje SC	Nyabushenyi
20	Nyabushenyi L	Nyarushanje SC	Nyabushenyi
21	Kiganga	Nyarushanje SC	Nyabushenyi
22	Rubirizi	Nyarushanje SC	Ibanda
23	Ibanda	Nyarushanje SC	Ibanda
24	Kabuga	Nyarushanje SC	Ibanda
25	Nyamabale	Nyarushanje SC	Bunono
1	Marashaniri	Nyakishenyi SC	Nyarugando
2	Ngoma	Nyakishenyi SC	Ngoma
3	Omurutooma	Nyakishenyi SC	Kahoko
4	Kibale	Nyakishenyi SC	Kahoko
5	Rusheshe	Nyakishenyi SC	Kahoko
6	Nyakishenyi	Nyakishenyi SC	Kacence
7	Nyakisoroza	Nyakishenyi SC	Kacence
8	Rwanyundo	Nyakishenyi SC	Rwanyundo
9	Murama	Nyakishenyi SC	Murama
10	Murago	Nyakishenyi SC	Murama
11	Kisya	Nyakishenyi SC	Murama
12	Katonya	Nyakishenyi SC	Katonya
13	Bugandaza	Nyakishenyi SC	Kafunjo

S/N	SCHOOL	SUB-COUNTY	PARISH
14	Bikongozo	Nyakishenyi SC	Bikongozo
15	Kafunjo	Nyakishenyi SC	Kafunjo
16	Nyarubare	Nyakishenyi SC	Nyarugando
17	Bugarama	Nyakishenyi SC	Katonya
18	Kigarama	Nyakishenyi SC	Ngoma
19	Mabindi	Nyakishenyi SC	Kacence
20	Nangara	Nyakishenyi SC	Murama
21	Kirimbe	Nyakishenyi SC	Kafunjo

Source: Education Department

### **ANNEX 3: Name of secondary schools by ownership by sub-county by county**

S/N	Name of school	Ownership	Sub-county	County
1	Bugangari S.S	Government Aided	Bugangari	Rujumbura
2	Katurika S.S	Government Aided	Buhunga	Rujumbura
3	Zed Fuoundation SS	Private	Buhunga	Rujumbura
4	St Francis Buhunga H.S	Government Aided	Buhunga	Rujumbura
5	Bwambara Modern	Private	Bwambara	Rujumbura
6	Bwambara S.S	Government Aided	Bwambara	Rujumbura
7	St Joseph Vocational S S Rushasha	Private	Nyakagyeme	Rujumbura
8	Nyakagyeme S.S	Government Aided	Nyakagyeme	Rujumbura
9	Kyabugashe High School	Government Aided	Nyakagyeme	Rujumbura
10	St John's Kahoko	Private	Nyakagyeme	Rujumbura
11	Nyakinengo High School	Private	Nyakagyeme	Rujumbura
16	St Lawrence SS	Private	Nyakagyeme	Rujumbura
12	Rwabukoba S.S	Government Aided	Ruhinda	Rujumbura
13	ST Raphael SS	Private	Ruhinda	Rujumbura
14	Bishop Robert Voc Ss Rwamagaya	Government Aided	Ruhinda	Rujumbura
15	Kashenyi S.S	Government Aided	Ruhinda	Rujumbura
17	Nyabiteete S.S	Government Aided	Buyanja	Rubabo
18	St Paul's Vocational S.S Buyanja	Government Aided	Buyanja	Rubabo
19	Buyanja Grammar Sch.	Private	Buyanja	Rubabo
20	Holly Field SS	Private	Buyanja	Rubabo
21	Trinity SS	Private	Buyanja	Rubabo
22	Buyanja Modern ss	Private	Buyanja	Rubabo
23	Rwakiseta Memorial	Private	Buyanja	Rubabo
24	St Athanathius SS	Private	Buyanja	Rubabo
25	Kyamakanda S.S	Government Aided	Buyanja	Rubabo
26	St Michael H/S	Private	Buyanja	Rubabo
27	St Anthony Mabanga S.S	Private	Kebisoni	Rubabo

28	Bishop Ruhindi Kebisoni HS	Government Aided	Kebisoni	Rubabo
29	Blesses P.V.S.S	Private	Kebisoni	Rubabo
30	Kebisoni Modern SS	Private	Kebisoni	Rubabo
31	St Jerome S.S Ndama	Government Aided	Kebisoni	Rubabo
32	Nyakishenyi High Sch.	Government Aided	Nyakishenyi	Rubabo
33	Kafunjo Modern High school	Private	Nyakishenyi	Rubabo
34	St Mathias Nyakishenyi Voc.Sch.	Government Aided	Nyakishenyi	Rubabo
35	Nyarushanje High School	Private	Nyarushanje	Rubabo
36	Rukungiri Voc.S.S Karukaata	Government Aided	Nyarushanje	Rubabo
37	Rubirizi S.S	Government Aided	Nyarushanje	Rubabo
38	Bwanga S.S	Private	Nyarushanje	Rubabo
39	Rubabo Vocational	Private	Nyarushanje	Rubabo
40	Nyabushenyi High School	Private	Nyarushanje	Rubabo
41	Grace High School	Private	Nyarushanje	Rubabo
42	St Peter's S.S Nyarushanje	Government Aided	Nyarushanje	Rubabo
43	Immaculate Heart SS	Government Aided	Eastern	Municipality
44	Kagunga Seed School	Government Aided	Eastern	Municipality
45	Kyatoko Hill side SS	Private	Eastern	Municipality
46	St Geralds SS	Government Aided	Southern	Municipality
47	Rukungiri High School	Private	Southern	Municipality
48	Kaloli Rwanga Seminary	Private	Southern	Municipality
49	St Mark SS Nyakibale	Private	Southern	Municipality
50	Kinyasano Girls High Schoeol	Government Aided	Western	Municipality
51	Makobore High School	Government Aided	Western	Municipality
52	Rukungiri Cental SS	Private	Western	Municipality
53	Mirembe Hillside Academy	Private	Western	Municipality
54	Misioderi SS	Private	Western	Municipality

Source: Education Department